

FBT

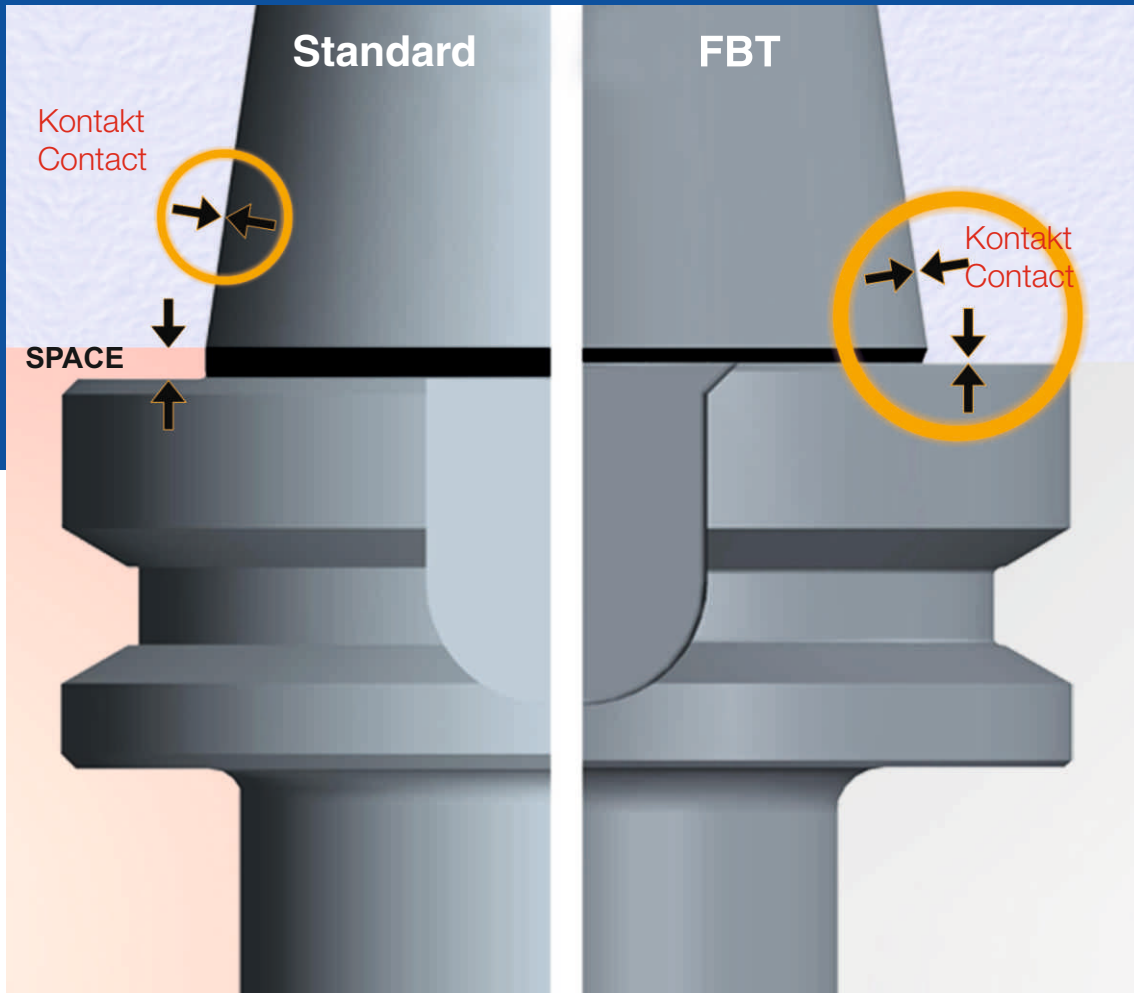
Steilkegel mit Plananlage
Face contact holders



Erhöhte Steifigkeit durch
vergrößerte Anlagefläche
Concurrent Taper &
Flange Contact

FBT - Eigenschaften und Vorteile

FBT - Features & Advantages

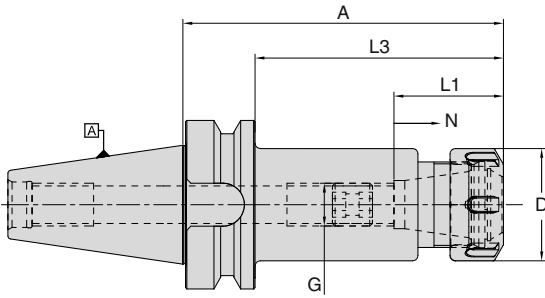


- Großflächiger und konischer Kontakt für optimierte Festigkeit und Steifigkeit
- Erhöhte Steifigkeit durch vergrößerte Anlagefläche
- Kein Axialspiel bei hohen Bearbeitungskräften
- Verbesserte Rundlaufeigenschaften
- Optimiertes Oberflächenfinish und höhere Maßhaltigkeit
- Large face and taper contact for optimised strength and rigidity
- Extremely high rigidity
- Maximum stability even at higher speeds
- Precise run-out
- Improved surface finish quality and accuracy compared to conventional BT spindle tapers

Spannzangenfutter ER Collet chuck ER	4 - 5
Super collet Spannzangenfutter Super collet chuck	6
Fräseraufnahmen (Weldon / Whistle Notch) End mill holder (Weldon / Whistle Notch)	7 - 8
Hochleistungsfräserspannfutter Hi-power milling chuck	9
Schlanke Hochleistungsfräserspannfutter Slim Hi-power milling chuck	10
Hydrodehnspannfutter Hydraulic expansion chuck	11
Aufnahmen für Morse-Kegel Morse taper holder	12
Aufnahmen für Einschraubfräser Chuck for threaded milling heads	13
Kombi-Aufsteckfräserdorn Combi shell mill holder	14
Aufsteckfräserdorn Shell mill holder	15
Kontrolldorn Test Arbor	16
Schrumpffutter Shrink fit chuck	16 - 18
Schlanke Schrumpffutter Slim Shrink fit chuck	19

FBT - Spannzangenfutter Typ ER für Spannzangen ISO 15488 (DIN 6499)

FBT - Collet chuck Type ER for collets to ISO 15488 (DIN 6499)

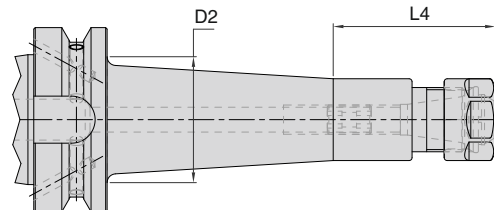


FBT30											
Spannzange Collet Type	Bereich Range	D (mm)	A (mm)	L1 (mm)	L3 (mm)	G (mm)	N	Kühlmittelezufuhr Coolant supply	N/W (Kg)	Bezeichnung Designation	Ident No.
ER 16	1-10	28	70	32.5	48	M10	12	Form "AD"	0.6	WCCH/ER16-70/FBT30	5126734
ER 20	1-13	34	70	38.0	48	M12	12	Form "AD"	0.7	WCCH/ER20-70/FBT30	5126736
ER 25	2-16	42	70	41.0	48	M12	12	Form "AD"	0.7	WCCH/ER25-70/FBT30	5126737
ER 32	2-20	50	70	47.0	48	M12	12	Form "AD"	0.8	WCCH/ER32-70/FBT30	5126738
ER 16	1-10	28	100	32.5	78	M10	12	Form "AD"	0.7	WCCH/ER16-100/FBT30	5126739
ER 20	1-13	34	100	38.0	78	M12	12	Form "AD"	0.9	WCCH/ER20-100/FBT30	5126740
ER 25	2-16	42	100	41.0	78	M12	12	Form "AD"	0.9	WCCH/ER25-100/FBT30	5126741

FBT40											
Spannzange Collet Type	Bereich Range	D (mm)	A (mm)	L1 (mm)	L3 (mm)	G (mm)	N	Kühlmittelezufuhr Coolant supply	N/W (Kg)	Bezeichnung Designation	Ident No.
ER 16	1-10	28	70	32.5	43	M10	12	Form "AD"	1.2	WCCH/ER16-70/FBT40	5126742
ER 20	1-13	34	70	38.0	43	M12	12	Form "AD"	1.2	WCCH/ER20-70/FBT40	5126743
ER 25	2-16	42	70	41.0	43	M16	12	Form "AD"	1.3	WCCH/ER25-70/FBT40	5126744
ER 32	2-20	50	70	47.0	43	M22X1.5	12	Form "AD"	1.4	WCCH/ER32-70/FBT40	5126745
ER 40	3-26	63	80	58.5	53	M22X1.5	12	Form "AD"	1.5	WCCH/ER40-80/FBT40	5126746
ER 16	1-10	28	100	32.5	73	M10	12	Form "AD"	1.3	WCCH/ER16-100/FBT40	5126747
ER 20	1-13	34	100	38.0	73	M12	12	Form "AD"	1.4	WCCH/ER20-100/FBT40	5126748
ER 25	2-16	42	100	41.0	73	M16	12	Form "AD"	1.4	WCCH/ER25-100/FBT40	5126749
ER 32	2-20	50	100	47.0	73	M22X1.5	12	Form "AD"	1.7	WCCH/ER32-100/FBT40	5126750
ER 40	3-26	63	100	58.5	73	M22X1.5	12	Form "AD"	1.9	WCCH/ER40-100/FBT40	5126756
ER 16	1-10	28	160	32.5	133	M10	12	Form "AD"	1.5	WCCH/ER16-160/FBT40❖	5126757
ER 20	1-13	34	160	38.0	133	M12	12	Form "AD"	1.8	WCCH/ER20-160/FBT40	5126758
ER 25	2-16	42	160	41.0	133	M16	12	Form "AD"	2.0	WCCH/ER25-160/FBT40	5126762
ER 32	2-20	50	160	47.0	133	M22X1.5	12	Form "AD"	2.5	WCCH/ER32-160/FBT40	5126876
ER 40	3-26	63	160	58.5	133	M22X1.5	12	Form "AD"	2.6	WCCH/ER40-160/FBT40	5126878

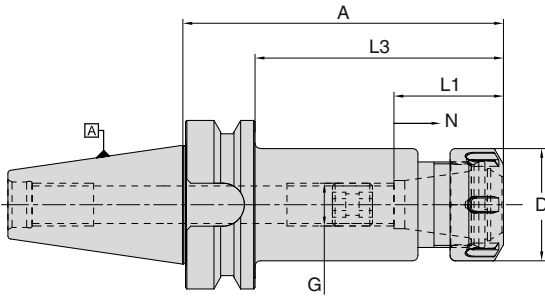
Ersatzteile und Zubehör / Spare Parts & Accessories: Pg.D7 Pg.D2 Pg.D4 Pg.D3

- Im Lieferumfang enthalten: mit Spannmutter (gewuchtet) und Verstelle schraube
- Höhere Wuchtgüte auf Anfrage
- ❖ Für WCCH/ER16-160/FBT40, D2=43.2mm & L4=55.5mm
- Delivery includes: Clamping nut (balanced) & adjusting screw
- Higher balancing grade on request
- ❖ Note: For WCCH/ER16-160/FBT40, D2=43.2mm & L4=55.5mm

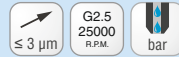


Spannzangenfutter Typ ER für Spannzangen ISO 15488 (DIN 6499)

Collet chuck Type ER for collets to ISO 15488 (DIN 6499)



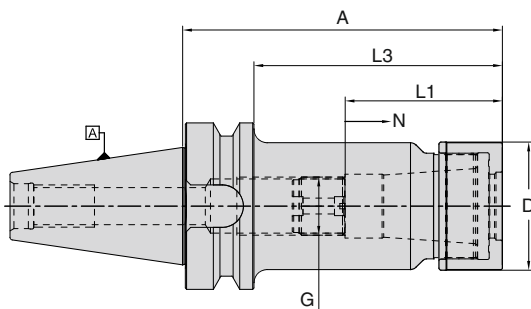
FBT50											
Spannzange Collet Type	Bereich Range	D (mm)	A (mm)	L1 (mm)	L3 (mm)	G (mm)	N	Kühlmittelzufuhr Coolant supply	N/W (Kg)	Bezeichnung Designation	Ident No.
ER 20	1-13	34	70	38.0	32	M12	12	Form "AD"	3.8	WCCH/ER20-70/FBT50	5126880
ER 25	2-16	42	70	41.0	32	M16	12	Form "AD"	3.7	WCCH/ER25-70/FBT50	5126881
ER 32	2-20	50	70	47.0	32	M22X1.5	12	Form "AD"	3.8	WCCH/ER32-70/FBT50	5126882
ER 40	3-26	63	80	58.5	42	M22X1.5	12	Form "AD"	4.0	WCCH/ER40-80/FBT50	5126883
ER 16	1-10	28	100	32.5	62	M10	12	Form "AD"	3.8	WCCH/ER16-100/FBT50	5126884
ER 20	1-13	34	100	38.0	62	M12	12	Form "AD"	3.9	WCCH/ER20-100/FBT50	5126886
ER 25	2-16	42	100	41.0	62	M16	12	Form "AD"	3.9	WCCH/ER25-100/FBT50	5126887
ER 32	2-20	50	100	47.0	62	M22X1.5	12	Form "AD"	4.1	WCCH/ER32-100/FBT50	5126889
ER 40	3-26	63	100	58.5	62	M22X1.5	12	Form "AD"	4.2	WCCH/ER40-100/FBT50	5126891
ER 16	1-10	28	160	32.5	122	M10	12	Form "AD"	4.1	WCCH/ER16-160/FBT50	5126892
ER 20	1-13	34	160	38.0	122	M12	12	Form "AD"	4.5	WCCH/ER20-160/FBT50	5126893
ER 25	2-16	42	160	41.0	122	M16	12	Form "AD"	4.6	WCCH/ER25-160/FBT50	5126894
ER 32	2-20	50	160	47.0	122	M22X1.5	12	Form "AD"	4.9	WCCH/ER32-160/FBT50	5126895
ER 40	3-26	63	160	58.5	122	M22X1.5	12	Form "AD"	5.0	WCCH/ER40-160/FBT50	5126896



Ersatzteile und Zubehör / Spare Parts & Accessories: Pg.D7 Pg.D2 Pg.D4 Pg.D3

- Im Lieferumfang enthalten: mit Spannmutter (gewuchtet) und Verstellechraube
- Höhere Wuchtgüte auf Anfrage
- Delivery includes: Clamping nut (balanced) & adjusting screw
- Higher balancing grade on request

Super collet Spannzangenfutter
Super collet chuck



FBT30											≤ 2µm	G2.5 25000 R.P.M.	bar
Spannzange Collet Type	Bereich Range	D (mm)	A (mm)	L1 (mm)	L3 (mm)	G (mm)	N (mm)	Kühlmittelezufuhr Coolant supply	N/W (Kg)	Bezeichnung Designation	Ident No.		
SC06	2-6	19.5	60	31.5	38	M8 x1	12	Form "AD"	0,53	WSCH/SCF06-60/FBT30	5127036		
SC10	2-10	27.1	60	35.0	38	M12 x1	12	Form "AD"	0,60	WSCH/SCF10-60/FBT30	5127039		
SC13	3-13	33.0	60	43.0	38	M15 x1	16	Form "AD"	0,62	WSCH/SCF13-60/FBT30	5127041		
SC16	3-16	40.0	60	52.0	38	M18 x1.5	16	Form "AD"	0,65	WSCH/SCF16-60/FBT30	5127052		
SC20	6-20	48.0	60	59.5	38	M22 x1.5	16	Form "AD"	0,70	WSCH/SCF20-60/FBT30	5127053		

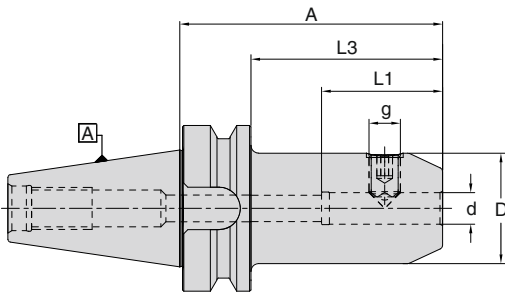
FBT40											≤ 2µm	G2.5 25000 R.P.M.	bar
Spannzange Collet Type	Bereich Range	D (mm)	A (mm)	L1 (mm)	L3 (mm)	G (mm)	N (mm)	Kühlmittelezufuhr Coolant supply	N/W (Kg)	Bezeichnung Designation	Ident No.		
SC06	2-6	19.5	90	31.5	63	M8 x1	12	Form "AD"	1,10	WSCH/SCF06-90/FBT40	5127054		
SC06	2-6	19.5	120	31.5	93	M8 x1	12	Form "AD"	1,20	WSCH/SCF06-120/FBT40	5127061		
SC10	2-10	27.1	90	35.0	63	M12 x1	12	Form "AD"	1,20	WSCH/SCF10-90/FBT40	5127055		
SC10	2-10	27.1	120	35.0	93	M12 x1	12	Form "AD"	1,35	WSCH/SCF10-120/FBT40	5127065		
SC13	3-13	33.0	90	43.0	63	M15 x1	16	Form "AD"	1,40	WSCH/SCF13-90/FBT40	5127056		
SC13	3-13	33.0	120	43.0	93	M15 x1	16	Form "AD"	1,50	WSCH/SCF13-120/FBT40	5127067		
SC16	3-16	40.0	90	52.0	63	M18 x1.5	16	Form "AD"	1,50	WSCH/SCF16-90/FBT40	5127057		
SC16	3-16	40.0	120	52.0	93	M18 x1.5	16	Form "AD"	1,70	WSCH/SCF16-120/FBT40	5127073		
SC20	6-20	48.0	90	59.5	63	M22 x1.5	16	Form "AD"	1,41	WSCH/SCF20-90/FBT40	5127058		
SC20	6-20	48.0	120	59.5	93	M22 x1.5	16	Form "AD"	2,01	WSCH/SCF20-120/FBT40	5127074		
SC25	6-25	55.0	90	63.5	63	M28 x1.5	20	Form "AD"	1,55	WSCH/SCF25-90/FBT40	5127059		
SC25	6-25	55.0	120	63.5	93	M28 x1.5	20	Form "AD"	2,20	WSCH/SCF25-120/FBT40	5127075		

FBT50											≤ 2µm	G2.5 25000 R.P.M.	bar
Spannzange Collet Type	Bereich Range	D (mm)	A (mm)	L1 (mm)	L3 (mm)	G (mm)	N (mm)	Kühlmittelezufuhr Coolant supply	N/W (Kg)	Bezeichnung Designation	Ident No.		
SC06	2-6	19.5	105	31.5	67	M8 x1	12	Form "AD"	3,70	WSCH/SCF06-105/FBT50	5127845		
SC06	2-6	19.5	165	31.5	127	M8 x1	12	Form "AD"	3,85	WSCH/SCF06-165/FBT50	5127851		
SC10	2-10	27.1	105	35.0	67	M12 x1	12	Form "AD"	3,85	WSCH/SCF10-105/FBT50	5127846		
SC10	2-10	27.1	165	35.0	127	M12 x1	12	Form "AD"	4,10	WSCH/SCF10-165/FBT50	5127852		
SC13	3-13	33.0	105	43.0	67	M15 x1	16	Form "AD"	4,10	WSCH/SCF13-105/FBT50	5127847		
SC13	3-13	33.0	165	43.0	127	M15 x1	16	Form "AD"	4,35	WSCH/SCF13-165/FBT50	5127853		
SC16	3-16	40.0	105	52.0	67	M18 x1.5	16	Form "AD"	4,10	WSCH/SCF16-105/FBT50	5127848		
SC16	3-16	40.0	165	52.0	127	M18 x1.5	16	Form "AD"	4,50	WSCH/SCF16-165/FBT50	5127854		
SC20	6-20	48.0	105	59.5	67	M22 x1.5	16	Form "AD"	4,30	WSCH/SCF20-105/FBT50	5127849		
SC20	6-20	48.0	165	59.5	127	M22 x1.5	16	Form "AD"	5,00	WSCH/SCF20-165/FBT50	5127855		
SC25	6-25	55.0	105	63.5	67	M28 x1.5	20	Form "AD"	4,30	WSCH/SCF25-105/FBT50	5127850		
SC25	6-25	55.0	165	63.5	127	M28 x1.5	20	Form "AD"	5,30	WSCH/SCF25-165/FBT50	5127856		

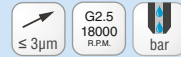
Ersatzteile und Zubehör / Spare Parts & Accessories:	Pg.D13	Pg.D15	Pg.D14	Pg.D7
--	--------	--------	--------	-------

• Im Lieferumfang enthalten: mit Spannmutter (gewuchtet) und Verstellechraube	• Delivery includes: Clamping nut (friction type), Adjusting screw
---	--

Fräseraufnahmen (Weldon) - für Zylinderschäfte gemäß DIN 1835B
 End mill holder (Weldon) - For cylindrical shanks according to DIN 1835B



FBT30									
d (mm)	D (mm)	A (mm)	L1 (mm)	L3 (mm)	g	Kühlmittelzufuhr Coolant supply	N/W (Kg)	Bezeichnung Designation	Ident No.
06	25	50	37.0	28	M6	Form "AD"	0.50	WSLH/06-50/FBT30	5128896
08	28	50	37.0	28	M8	Form "AD"	0.50	WSLH/08-50/FBT30	5128899
10	35	50	41.0	28	M10	Form "AD"	0.60	WSLH/10-50/FBT30	5128901
12	42	50	46.0	28	M12	Form "AD"	0.65	WSLH/12-50/FBT30	5128902
14	44	50	46.0	28	M12	Form "AD"	0.65	WSLH/14-50/FBT30	5128903
16	48	63	49.0	41	M14	Form "AD"	0.90	WSLH/16-63/FBT30	5128904
18	50	63	49.0	41	M14	Form "AD"	0.95	WSLH/18-63/FBT30	5128905
20	52	63	51.0	41	M16	Form "AD"	0.95	WSLH/20-63/FBT30	5128906

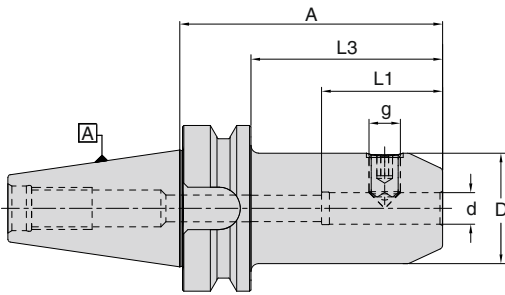


FBT40									
d (mm)	D (mm)	A (mm)	L1 (mm)	L3 (mm)	g	Kühlmittelzufuhr Coolant supply	N/W (Kg)	Bezeichnung Designation	Ident No.
16	48	35	49.0	8	M14	Form "AD"	1.05	WSLH/16-35/FBT40*	5128908
20	52	35	51.0	8	M16	Form "AD"	1.10	WSLH/20-35/FBT40*	5128909
25	45	35	59.0	8	M16	Form "AD"	1.00	WSLH/25-35/FBT40*	5128910
32	63	65	63.0	38	M20 x2	Form "AD"	1.50	WSLH/32-65/FBT40*	5128911
06	25	50	37.0	23	M6	Form "AD"	1.02	WSLH/06-50/FBT40	5128912
08	28	50	37.0	23	M8	Form "AD"	1.10	WSLH/08-50/FBT40	5128917
10	35	63	41.0	36	M10	Form "AD"	1.25	WSLH/10-63/FBT40	5128918
12	42	63	46.0	36	M12	Form "AD"	1.30	WSLH/12-63/FBT40	5128919
14	44	63	46.0	36	M12	Form "AD"	1.30	WSLH/14-63/FBT40	5128920
16	48	63	49.0	36	M14	Form "AD"	1.40	WSLH/16-63/FBT40	5128921
18	50	63	49.0	36	M14	Form "AD"	1.40	WSLH/18-63/FBT40	5128922
20	52	63	51.0	36	M16	Form "AD"	1.50	WSLH/20-63/FBT40	5128923
25	65	90	59.0	63	M18 x2	Form "AD"	2.20	WSLH/25-90/FBT40 **	5128924
32	72	100	63.0	73	M20 x2	Form "AD"	2.70	WSLH/32-100/FBT40 **	5128926
40	80	120	73.0	93	M20 x2	Form "AD"	3.55	WSLH/40-120/FBT40 **	5128927
06	25	100	37.0	73	M6	Form "AD"	1.22	WSLH/06-100/FBT40	5128929
08	28	100	37.0	73	M8	Form "AD"	1.30	WSLH/08-100/FBT40	5129001
10	35	100	41.0	73	M10	Form "AD"	1.50	WSLH/10-100/FBT40	5129002
12	42	100	46.0	73	M12	Form "AD"	1.70	WSLH/12-100/FBT40	5129003
14	44	100	46.0	73	M12	Form "AD"	1.70	WSLH/14-100/FBT40	5129004
16	48	100	49.0	73	M14	Form "AD"	1.85	WSLH/16-100/FBT40	5129006
18	50	100	49.0	73	M14	Form "AD"	1.90	WSLH/18-100/FBT40	5129007
20	52	100	51.0	73	M16	Form "AD"	2.00	WSLH/20-100/FBT40	5129008
06	25	160	37.0	133	M6	Form "AD"	1.60	WSLH/06-160/FBT40 ❖	5129832
08	28	160	37.0	133	M8	Form "AD"	1.75	WSLH/08-160/FBT40 ❖	5130641
10	35	160	41.0	133	M10	Form "AD"	2.05	WSLH/10-160/FBT40 ❖	5130642
12	42	160	46.0	133	M12	Form "AD"	2.30	WSLH/12-160/FBT40	5130643
14	44	160	46.0	133	M12	Form "AD"	2.40	WSLH/14-160/FBT40	5130644
16	48	160	49.0	133	M14	Form "AD"	2.70	WSLH/16-160/FBT40	5130645
18	50	160	49.0	133	M14	Form "AD"	2.80	WSLH/18-160/FBT40	5130646
20	52	160	51.0	133	M16	Form "AD"	2.90	WSLH/20-160/FBT40	5130647
25	65	160	59.0	133	M18 x2	Form "AD"	4.00	WSLH/25-160/FBT40 **	5130649

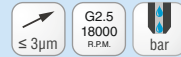
Ersatzteile und Zubehör / Spare Parts & Accessories: Pg.D7 Pg.E2

- ** 2 Spannschrauben für ID Größe = 25 / 32 / 40 | • Bohrungstoleranz H4
 * Extra kurze Aufnahmen: • Die Spannschrauben sind im Mitnehmer
 • Maximale Steifigkeit dank kurzer Auskraglänge | • Im Lieferumfang enthalten:
 Spannschraube | • Höhere Wuchtgüte auf Anfrage | ❖ siehe Seite 8
- ** 2 locking screws for ID size = 25 / 32 / 40 | • Bore tolerance H4
 * Extra short holders:
 • Locking screws are located in the same plane as drive slots.
 • Gives maximum rigidity due to short projection
 • Delivery includes: Locking screw | ❖ Refer page 8

Fräseraufnahmen (Weldon) - für Zylinderschäfte gemäß DIN 1835B
 End mill holder (Weldon) - For cylindrical shanks according to DIN 1835B



FBT50									
d (mm)	D (mm)	A (mm)	L1 (mm)	L3 (mm)	g	Kühlmittelzufuhr Coolant supply	N/W (Kg)	Bezeichnung Designation	Ident No.
06	25	63	37	25	M6	Form "AD"	3.70	WSLH/06-63/FBT50	5131410
08	28	63	37	25	M8	Form "AD"	3.70	WSLH/08-63/FBT50	5131411
10	35	63	41	25	M10	Form "AD"	3.80	WSLH/10-63/FBT50	5131412
12	42	80	46	42	M12	Form "AD"	4.00	WSLH/12-80/FBT50	5131413
14	44	80	46	42	M12	Form "AD"	4.00	WSLH/14-80/FBT50	5131415
16	48	80	49	42	M14	Form "AD"	4.05	WSLH/16-80/FBT50	5131416
18	50	80	49	42	M14	Form "AD"	4.10	WSLH/18-80/FBT50	5131417
20	52	80	51	42	M16	Form "AD"	4.15	WSLH/20-80/FBT50	5131768
25	65	100	59	62	M18 x2	Form "AD"	4.80	WSLH/25-100/FBT50 **	5131769
32	72	105	63	67	M20 x2	Form "AD"	5.15	WSLH/32-105/FBT50 **	5131770
40	80	110	73	72	M20 x2	Form "AD"	5.50	WSLH/40-110/FBT50 **	5131771
06	25	100	37	62	M6	Form "AD"	3.80	WSLH/06-100/FBT50	5131772
08	28	100	37	62	M8	Form "AD"	3.85	WSLH/08-100/FBT50	5131773
10	35	100	41	62	M10	Form "AD"	3.95	WSLH/10-100/FBT50	5131774
12	42	100	46	62	M12	Form "AD"	4.15	WSLH/12-100/FBT50	5131775
14	44	100	46	62	M12	Form "AD"	4.25	WSLH/14-100/FBT50	5131776
16	48	100	49	62	M14	Form "AD"	4.35	WSLH/16-100/FBT50	5131777
18	50	100	49	62	M14	Form "AD"	4.40	WSLH/18-100/FBT50	5131778
20	52	100	51	62	M16	Form "AD"	4.40	WSLH/20-100/FBT50	5131779
06	25	160	37	122	M6	Form "AD"	4.10	WSLH/06-160/FBT50 ❖	5131780
08	28	160	37	122	M8	Form "AD"	4.25	WSLH/08-160/FBT50 ❖	5131781
10	35	160	41	122	M10	Form "AD"	4.60	WSLH/10-160/FBT50 ❖	5131782
12	42	160	46	122	M12	Form "AD"	4.80	WSLH/12-160/FBT50	5131783
14	44	160	46	122	M12	Form "AD"	4.90	WSLH/14-160/FBT50	5131784
16	48	160	49	122	M14	Form "AD"	5.15	WSLH/16-160/FBT50	5131787
18	50	160	49	122	M14	Form "AD"	5.25	WSLH/18-160/FBT50	5131788
20	52	160	51	122	M16	Form "AD"	5.40	WSLH/20-160/FBT50	5131789
25	65	160	59	122	M18 x2	Form "AD"	6.25	WSLH/25-160/FBT50 **	5131790
32	72	160	63	122	M20 x2	Form "AD"	6.80	WSLH/32-160/FBT50 **	5131791



Ersatzteile und Zubehör / Spare Parts & Accessories:



Pg.E2

** 2 Spannschrauben für ID Größe = 25 / 32 / 40

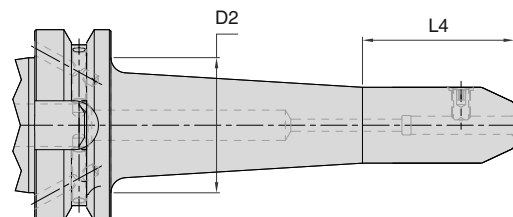
- Bohrungstoleranz H4
- Im Lieferumfang enthalten: Spannschraube
- Höhere Wuchtgüte auf Anfrage

- ❖ Für WSLH/06-160/FBT40, D2=44.6mm & L4=50mm
- Für WSLH/08-160/FBT40, D2=47.6mm & L4=50mm
- Für WSLH/10-160/FBT40, D2=53.3mm & L4=60mm
- Für WSLH/06-160/FBT50, D2=39.5mm & L4=50mm
- Für WSLH/08-160/FBT50, D2=42.4mm & L4=50mm
- Für WSLH/10-160/FBT50, D2=49.4mm & L4=50mm

** 2 locking screws for ID size = 25 / 32 / 40

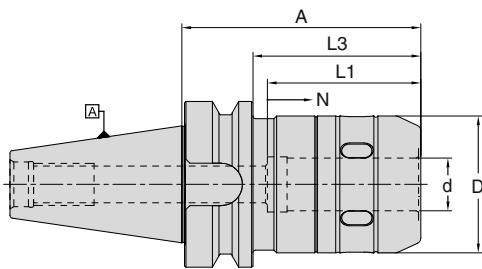
- Bore tolerance H4
- Delivery includes: Locking screw
- Higher balancing grade on request

- ❖ For WSLH/06-160/FBT40, D2=44.6mm & L4=50mm
- Für WSLH/08-160/FBT40, D2=47.6mm & L4=50mm
- Für WSLH/10-160/FBT40, D2=53.3mm & L4=60mm
- Für WSLH/06-160/FBT50, D2=39.5mm & L4=50mm
- Für WSLH/08-160/FBT50, D2=42.4mm & L4=50mm
- Für WSLH/10-160/FBT50, D2=49.4mm & L4=50mm



Hochleistungsfräserspannfutter

Hi-Power Milling Chuck



FBT30									
<div style="display: flex; justify-content: flex-end; gap: 10px;"> ≤ 3µm G2.5 10000 R.P.M. bar </div>									
d (mm)	D (mm)	A (mm)	L1 (mm)	L3 (mm)	N	Kühlmittelzufuhr Coolant supply	N/W (Kg)	Bezeichnung Designation	Ident No.
20	52	90	60	68	15	Form "AD"	1.45	WHPMC/20-90/FBT30	5131797
25	58	90	70	68	15	Form "AD"	1.55	WHPMC/25-90/FBT30	5131819
32	66	105	75	83	15	Form "AD"	1.85	WHPMC/32-105/FBT30	5131820

FBT40									
<div style="display: flex; justify-content: flex-end; gap: 10px;"> ≤ 3µm G2.5 10000 R.P.M. bar </div>									
d (mm)	D (mm)	A (mm)	L1 (mm)	L3 (mm)	N	Kühlmittelzufuhr Coolant supply	N/W (Kg)	Bezeichnung Designation	Ident No.
20	52	90	60	63	15	Form "AD"	2.35	WHPMC/20-90/FBT40	5131821
25	58	90	70	63	15	Form "AD"	2.10	WHPMC/25-90/FBT40	5131822
32	66	105	75	78	15	Form "AD"	2.60	WHPMC/32-105/FBT40	5131823

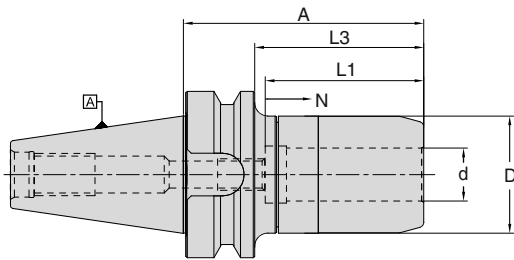
FBT50									
<div style="display: flex; justify-content: flex-end; gap: 10px;"> ≤ 3µm G2.5 10000 R.P.M. bar </div>									
d (mm)	D (mm)	A (mm)	L1 (mm)	L3 (mm)	N	Kühlmittelzufuhr Coolant supply	N/W (Kg)	Bezeichnung Designation	Ident No.
20	52	90	60	52	15	Form "AD"	5.55	WHPMC/20-90/FBT50	5131824
25	58	90	60	52	15	Form "AD"	4.55	WHPMC/25-90/FBT50	5131825
32	66	105	75	67	15	Form "AD"	4.90	WHPMC/32-105/FBT50	5131826

Ersatzteile und Zubehör / Spare Parts & Accessories: Pg.D10 Pg.D10 Pg.D7

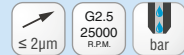
Technische Details siehe / For technical details please refer the instruction manual provided in the packing box or in our 'cnc tool holders' catalogue

Schlanke Hochleistungsfräserspannfutter

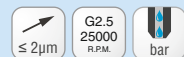
Slim Hi-Power Milling Chuck



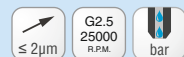
FBT30									
d (mm)	D (mm)	A (mm)	L1 (mm)	L3 (mm)	N	Kühlmittelezufuhr Coolant Supply	N/W (Kg)	Bezeichnung Designation	Ident No.
6	25	100	36	78	8	Form "AD"	0,90	WHPMC/S06-100/FBT30	5131827
8	25	100	36	78	8	Form "AD"	0,90	WHPMC/S08-100/FBT30	5131828
10	30	100	42	78	8	Form "AD"	0,90	WHPMC/S10-100/FBT30	5131830
12	30	70	45	48	8	Form "AD"	0,85	WHPMC/S12-70/FBT30	5131831
12	30	120	45	98	8	Form "AD"	1,20	WHPMC/S12-120/FBT30	5131832
16	38	70	50	48	10	Form "AD"	0,80	WHPMC/S16-70/FBT30	5131833
16	38	120	50	98	10	Form "AD"	1,20	WHPMC/S16-120/FBT30	5131834



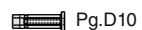
FBT40									
d (mm)	D (mm)	A (mm)	L1 (mm)	L3 (mm)	N	Kühlmittelezufuhr Coolant Supply	N/W (Kg)	Bezeichnung Designation	Ident No.
6	25	100	36	73	8	Form "AD"	1,70	WHPMC/S06-100/FBT40	5131875
8	25	100	36	73	8	Form "AD"	1,70	WHPMC/S08-100/FBT40	5131880
10	30	100	42	73	8	Form "AD"	1,70	WHPMC/S10-100/FBT40	5131883
12	30	70	45	43	8	Form "AD"	1,55	WHPMC/S12-70/FBT40	5131884
12	30	120	45	93	8	Form "AD"	1,85	WHPMC/S12-120/FBT40	5131885
16	38	70	50	43	10	Form "AD"	1,45	WHPMC/S16-70/FBT40	5131886
16	38	120	50	93	10	Form "AD"	2,20	WHPMC/S16-120/FBT40	5131887
20	44	90	55	63	10	Form "AD"	2,10	WHPMC/S20-90/FBT40	5131889
20	44	150	55	123	10	Form "AD"	2,90	WHPMC/S20-150/FBT40	5131890



FBT50									
d (mm)	D (mm)	A (mm)	L1 (mm)	L3 (mm)	N	Kühlmittelezufuhr Coolant Supply	N/W (Kg)	Bezeichnung Designation	Ident No.
12	30	90	45	52	8	Form "AD"	4,95	WHPMC/S12-90/FBT50	5131893
12	30	120	45	82	8	Form "AD"	5,15	WHPMC/S12-120/FBT50	5131894
16	38	90	50	52	10	Form "AD"	5,20	WHPMC/S16-90/FBT50	5131895
16	38	120	50	82	10	Form "AD"	5,35	WHPMC/S16-120/FBT50	5131896
20	44	100	55	62	10	Form "AD"	5,45	WHPMC/S20-100/FBT50	5131897
20	44	150	55	112	10	Form "AD"	6,00	WHPMC/S20-150/FBT50	5131898

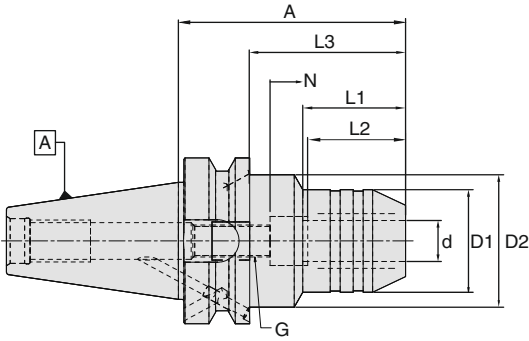


Ersatzteile und Zubehör / Spare Parts & Accessories:



Technische Details siehe / For technical details please refer the instruction manual provided in the packing box or in our 'cnc tool holders' catalogue

Hydrodehnspannfutter
Hydraulic expansion chuck



FBT30												
d (mm)	A	D1 (mm)	D2 (mm)	L1	L2	L3	G	N	N/W (Kg)	Kühlmittelzufuhr Coolant supply	Bezeichnung Designation	Ident No.
06	70	26	44.5	29.5	27	48	M5X0.8	10	0.65	Form "AD"	WHEC/06-70/FBT30	5131900
08	70	28	44.5	30.0	27	48	M6X1.0	10	0.65	Form "AD"	WHEC/08-70/FBT30	5131901
10	75	30	44.5	31.0	32	53	M8X1.0	10	0.73	Form "AD"	WHEC/10-75/FBT30	5131902
12	85	32	45.0	45.0	37	63	M10X1.0	10	0.80	Form "AD"	WHEC/12-85/FBT30	5131903
14	85	34	45.0	45.0	37	63	M10X1.0	10	0.80	Form "AD"	WHEC/14-85/FBT30	5131904
16	90	38	45.0	50.0	42	68	M12X1.0	10	0.90	Form "AD"	WHEC/16-90/FBT30	5131905
20	90	42	45.0	50.0	42	68	M16X1.0	10	0.90	Form "AD"	WHEC/20-90/FBT30	5131906

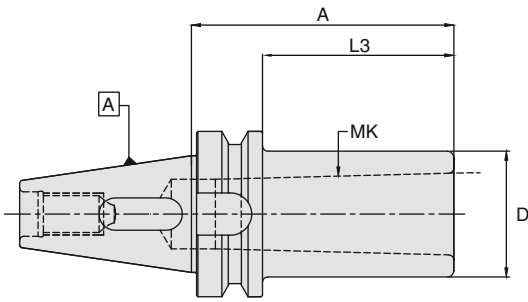
FBT40												
d (mm)	A	D1 (mm)	D2 (mm)	L1	L2	L3	G	N	N/W (Kg)	Kühlmittelzufuhr Coolant supply	Bezeichnung Designation	Ident No.
06	90	26	44.5	43.0	27	63	M5X0.8	10	1.30	Form "AD"	WHEC/06-90/FBT40	5131908
08	90	28	44.5	44.5	27	63	M6X1.0	10	1.30	Form "AD"	WHEC/08-90/FBT40	5131909
10	90	30	44.5	44.5	32	63	M8X1.0	10	1.35	Form "AD"	WHEC/10-90/FBT40	5132040
12	90	32	44.5	44.5	37	63	M10X1.0	10	1.35	Form "AD"	WHEC/12-90/FBT40	5132041
14	90	34	44.5	44.5	37	63	M10X1.0	10	1.35	Form "AD"	WHEC/14-90/FBT40	5132042
16	90	38	44.5	47.5	42	63	M12X1.0	10	1.40	Form "AD"	WHEC/16-90/FBT40	5132043
18	90	40	44.5	47.5	42	63	M12X1.0	10	1.45	Form "AD"	WHEC/18-90/FBT40	5132044
20	90	42	44.5	47.5	42	63	M16X1.0	10	1.50	Form "AD"	WHEC/20-90/FBT40	5132045
25	100	50	60.0	47.5	48	73	M16X1.0	10	1.70	Form "AD"	WHEC/25-100/FBT40	5132046
32	105	60			55	78	M16X1.0	10	2.10	Form "AD"	WHEC/32-105/FBT40	5132048

FBT50												
d (mm)	A	D1 (mm)	D2 (mm)	L1	L2	L3	G	N	N/W (Kg)	Kühlmittelzufuhr Coolant supply	Bezeichnung Designation	Ident No.
06	90	26	44.5	34.0	27	52	M5X0.8	10	3.75	Form "AD"	WHEC/06-90/FBT50	5132049
08	90	28	44.5	34.0	27	52	M6X1.0	10	3.75	Form "AD"	WHEC/08-90/FBT50	5132050
10	90	30	44.5	34.0	32	52	M8X1.0	10	3.90	Form "AD"	WHEC/10-90/FBT50	5132051
12	90	32	44.5	34.0	37	52	M10X1.0	10	3.90	Form "AD"	WHEC/12-90/FBT50	5132052
14	90	34	44.5	34.0	37	52	M10X1.0	10	3.90	Form "AD"	WHEC/14-90/FBT50	5132053
16	90	38	44.5	34.0	42	52	M12X1.0	10	4.00	Form "AD"	WHEC/16-90/FBT50	5132054
18	90	40	44.5	34.0	42	52	M12X1.0	10	4.00	Form "AD"	WHEC/18-90/FBT50	5132055
20	90	42	44.5	34.0	42	52	M16X1.0	10	4.00	Form "AD"	WHEC/20-90/FBT50	5132056
25	105	57	63.0	52.0	48	67	M16X1.0	10	4.40	Form "AD"	WHEC/25-105/FBT50	5132057
32	115	64	75.0	62.0	55	77	M16X1.0	10	4.70	Form "AD"	WHEC/32-115/FBT50	5132058

Ersatzteile und Zubehör / Spare Parts & Accessories: Pg.D11 Pg.D7

Zwischenhülsen für Morse-Kegel mit Austreibblappen DIN 6383

Adaptor sleeves for Morse taper with tang to DIN 6383



FBT30							
MK	D (mm)	A (mm)	L3 (mm)	Kühlmittelzufuhr Coolant supply	N/W (Kg)	Bezeichnung Designation	Ident No.
1	25	45	23	-	1.1	WMTA/MT1-45/FBT30	5132139
2	32	60	38	-	1.2	WMTA/MT2-60/FBT30	5132140
3	40	75	53	-	1.3	WMTA/MT3-75/FBT30	5132142

≤ 10µm G2.5 18000 R.P.M.

FBT40							
MK	D (mm)	A (mm)	L3 (mm)	Kühlmittelzufuhr Coolant supply	N/W (Kg)	Bezeichnung Designation	Ident No.
1	25	50	23	-	1.20	WMTA/MT1-50/FBT40	5132143
2	32	50	23	-	1.20	WMTA/MT2-50/FBT40	5132144
3	40	70	43	-	1.30	WMTA/MT3-70/FBT40	5132145
4	48	95	68	-	1.50	WMTA/MT4-95/FBT40	5132146

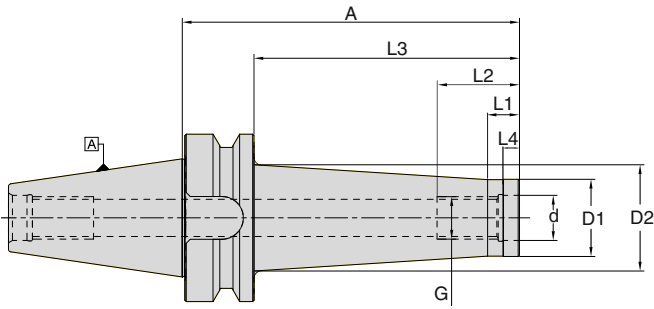
≤ 10µm G2.5 18000 R.P.M.

FBT50							
MK	D (mm)	A (mm)	L3 (mm)	Kühlmittelzufuhr Coolant supply	N/W (Kg)	Bezeichnung Designation	Ident No.
1	25	45	7	-	3.65	WMTA/MT1-45/FBT50	5132229
2	32	60	22	-	3.70	WMTA/MT2-60/FBT50	5132230
3	40	65	27	-	3.70	WMTA/MT3-65/FBT50	5132231
4	48	95	57	-	3.90	WMTA/MT4-95/FBT50	5132233
5	70	105	67	-	4.20	WMTA/MT5-105/FBT50	5132237

≤ 10µm G2.5 18000 R.P.M.

Ersatzteile und Zubehör / Spare Parts & Accessories: Pg.D7

Aufnahme für Einschraubfräser
Chuck for threaded milling heads



FBT40												
G	d (mm)	D1 (mm)	D2 (mm)	A (mm)	L1 (mm)	L2 (mm)	L3 (mm)	L4 (mm)	Kühlmittelezufuhr Coolant supply	N/W (Kg)	Bezeichnung Designation	Ident No.
M8	8.5	13.8	23	77	12	19	50	6.5	Form "AD"	1.1	WTA/M8-77/FBT40	5132238
M8	8.5	13.8	25	102	12	19	75	6.5	Form "AD"	1.3	WTA/M8-102/FBT40	5132239
M10	10.5	18.0	25	77	12	19	50	6.5	Form "AD"	1.2	WTA/M10-77/FBT40	5132240
M10	10.5	18.0	30	102	12	19	75	6.5	Form "AD"	1.3	WTA/M10-102/FBT40	5132241
M12	12.5	21.0	30	77	12	25	50	7.0	Form "AD"	1.2	WTA/M12-77/FBT40	5132242
M12	12.5	21.0	35	102	12	25	75	7.0	Form "AD"	1.3	WTA/M12-102/FBT40	5132243
M12	12.5	21.0	38	127	12	25	100	7.0	Form "AD"	1.5	WTA/M12-127/FBT40	5132244
M16	17.0	29.0	34	77	12	31	50	8.0	Form "AD"	1.2	WTA/M16-77/FBT40	5132245
M16	17.0	29.0	35	102	12	31	75	8.0	Form "AD"	1.4	WTA/M16-102/FBT40	5132246
M16	17.0	29.0	40	127	12	31	100	8.0	Form "AD"	1.6	WTA/M16-127/FBT40	5132247



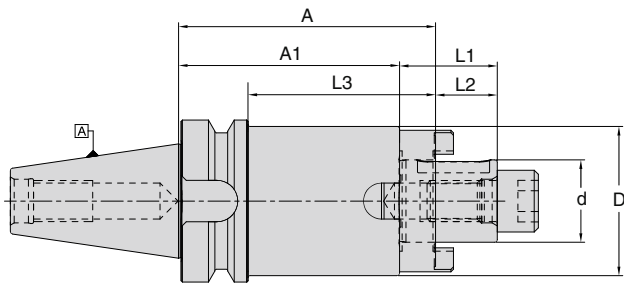
FBT50												
G	d (mm)	D1 (mm)	D2 (mm)	A (mm)	L1 (mm)	L2 (mm)	L3 (mm)	L4 (mm)	Kühlmittelezufuhr Coolant supply	N/W (Kg)	Bezeichnung Designation	Ident No.
M12	12.5	21.0	35	88	12	25	50	7.0	Form "AD"	3.9	WTA/M12-88/FBT50	5132248
M16	17.0	29.0	35	88	12	31	50	8.0	Form "AD"	3.9	WTA/M16-88/FBT50	5132249



Ersatzteile und Zubehör / Spare Parts & Accessories: Pg.D7

Siehe Seite D12 für Einschraubfräser Verlängerung & Reduzierung Refer page. D12 for Threaded Arbor extensions & reductions.

Aufsteckfräserdorn DIN 6358 mit Längs- und Quernut (Kombination)
Shell mill holder with DIN 6358 (Combination)



FBT30										 $\leq 5\mu\text{m}$	 G2.5 18000 R.P.M.
d (mm)	D (mm)	A (mm)	A1 (mm)	L1 (mm)	L2 (mm)	L3 (mm)	Kühlmittelezufuhr Coolant supply	N/W (Kg)	Bezeichnung Designation	Ident No.	
16	32	45	35	27	17	23	-	0.75	WFSH/16-45/FBT30 *	5132301	
22	40	47	35	31	19	25	-	0.85	WFSH/22-47/FBT30 *	5132302	
27	46	49	37	33	21	27	-	1.00	WFSH/27-49/FBT30 *	5132303	

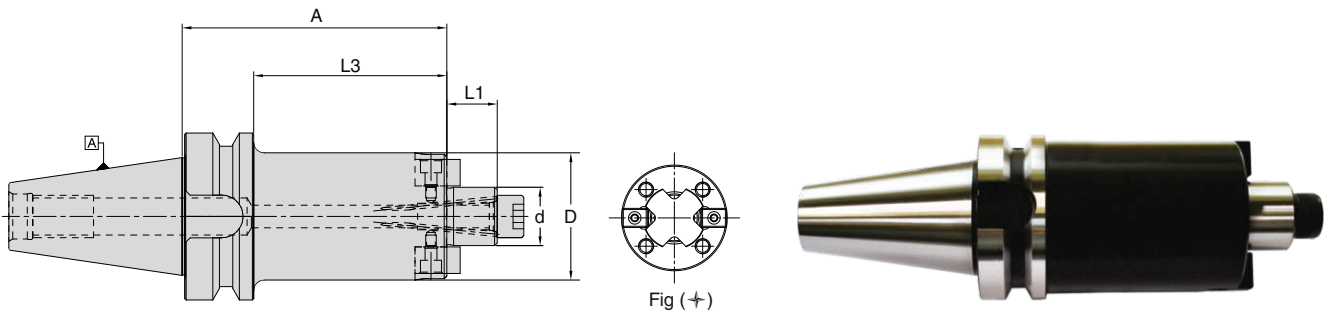
FBT40										 $\leq 5\mu\text{m}$	 G2.5 18000 R.P.M.
d (mm)	D (mm)	A (mm)	A1 (mm)	L1 (mm)	L2 (mm)	L3 (mm)	Kühlmittelezufuhr Coolant supply	N/W (Kg)	Bezeichnung Designation	Ident No.	
16	32	55	45	27	17	28	-	1.25	WFSH/16-55/FBT40	5132304	
22	40	55	43	31	19	28	-	1.40	WFSH/22-55/FBT40	5132305	
27	48	55	43	33	21	28	-	1.65	WFSH/27-55/FBT40	5132306	
32	58	60	46	38	24	33	-	2.00	WFSH/32-60/FBT40	5132307	
40	70	60	46	41	27	33	-	2.30	WFSH/40-60/FBT40 **	5132308	
16	32	100	90	27	17	73	-	1.60	WFSH/16-100/FBT40	5132309	
22	40	100	88	31	19	73	-	1.85	WFSH/22-100/FBT40	5132312	
27	48	100	88	33	21	73	-	2.30	WFSH/27-100/FBT40	5132313	
32	58	100	86	38	24	73	-	2.70	WFSH/32-100/FBT40	5132314	
40	70	100	86	41	27	73	-	3.50	WFSH/40-100/FBT40 **	5132315	

FBT50										 $\leq 5\mu\text{m}$	 G2.5 18000 R.P.M.
d (mm)	D (mm)	A (mm)	A1 (mm)	L1 (mm)	L2 (mm)	L3 (mm)	Kühlmittelezufuhr Coolant supply	N/W (Kg)	Bezeichnung Designation	Ident No.	
16	32	70	60	27	17	32	-	4.00	WFSH/16-70/FBT50	5132399	
22	40	70	58	31	19	32	-	4.20	WFSH/22-70/FBT50	5132401	
27	48	70	58	33	21	32	-	4.35	WFSH/27-70/FBT50	5132402	
32	58	70	56	38	24	32	-	4.70	WFSH/32-70/FBT50	5132403	
40	70	70	56	41	27	32	-	5.05	WFSH/40-70/FBT50 **	5132404	

Ersatzteile und Zubehör / Spare Parts & Accessories: Pg.E3 Pg.E4 Pg.E3 Pg.D8 Pg.D7

- Im Lieferumfang enthalten: Passfeder, Mitnehmerring, Fräseranzugsschraube und Spannschrauben (DIN 912)
- Delivery includes: Parallel key, drive ring, clamping screw and locking screw (DIN 912)
- * Im Lieferumfang enthalten: Spannschrauben (DIN 912 & DIN 6367)
- * Delivery includes: Locking screw (DIN 912 & DIN 6367)
- ** Im Lieferumfang enthalten: Spannschrauben (DIN 6367)
- ** Delivery includes: Locking screw (DIN 6367)

Aufnahmedorn mit Innenzentrierung DIN 6357 mit vergrößertem Bunddurchmesser
Shell mill holder DIN 6357 for cutters with drive key



FBT30								
d (mm)	D (mm)	A (mm)	L1 (mm)	L3 (mm)	Kühlmittelezufuhr Coolant supply	N/W (Kg)	Bezeichnung Designation	Ident No.
16	38	40	17	18	-	0.70	WSMH/16-40/FBT30*	5132405
22	48	40	19	18	-	0.85	WSMH/22-40/FBT30*	5132406
27	58	40	21	18	-	1.00	WSMH/27-40/FBT30*	5132407
32	78	50	24	28	-	1.00	WSMH/32-50/FBT30*	5132408

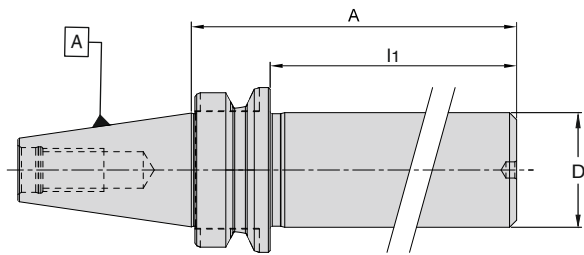
FBT40								
d (mm)	D (mm)	A (mm)	L1 (mm)	L3 (mm)	Kühlmittelezufuhr Coolant supply	N/W (Kg)	Bezeichnung Designation	Ident No.
16	38	40	17	13	Form "AD"	1.20	WSMH/16-40/FBT40	5132414
22	48	40	19	13	Form "AD"	1.30	WSMH/22-40/FBT40	5132415
27	58	40	21	13	Form "AD"	1.55	WSMH/27-40/FBT40	5132416
32	78	50	24	23	Form "AD"	1.95	WSMH/32-50/FBT40	5132418
40	88	50	27	23	Form "AD"	2.45	WSMH/40-50/FBT40+	5132427
16	38	100	17	73	Form "AD"	1.70	WSMH/16-100/FBT40	5132431
22	48	100	19	73	Form "AD"	2.20	WSMH/22-100/FBT40	5132433
27	58	100	21	73	Form "AD"	2.70	WSMH/27-100/FBT40	5132544
32	78	100	24	73	Form "AD"	3.80	WSMH/32-100/FBT40	5132546
40	88	100	27	73	Form "AD"	4.65	WSMH/40-100/FBT40+	5132547
16	38	160	17	133	Form "AD"	2.20	WSMH/16-160/FBT40	5132548
22	48	160	19	133	Form "AD"	2.95	WSMH/22-160/FBT40	5132549
27	58	160	21	133	Form "AD"	3.90	WSMH/27-160/FBT40	5132550
32	78	160	24	133	Form "AD"	5.90	WSMH/32-160/FBT40	5132551
40	88	160	27	133	Form "AD"	7.45	WSMH/40-160/FBT40+	5132553

FBT50								
d (mm)	D (mm)	A (mm)	L1 (mm)	L3 (mm)	Kühlmittelezufuhr Coolant supply	N/W (Kg)	Bezeichnung Designation	Ident No.
16	38	63	17	25	Form "AD"	3.85	WSMH/16-63/FBT50	5132554
22	48	63	19	25	Form "AD"	4.00	WSMH/22-63/FBT50	5132555
27	58	63	21	25	Form "AD"	4.30	WSMH/27-63/FBT50	5132556
32	78	60	24	22	Form "AD"	4.50	WSMH/32-60/FBT50	5132557
40	88	60	27	22	Form "AD"	5.10	WSMH/40-60/FBT50+	5132558
60	129	80	40	42	-	8.80	WSMH/60-80/FBT50+	5132559
16	38	100	17	62	Form "AD"	4.25	WSMH/16-100/FBT50	5126640
22	48	100	19	62	Form "AD"	4.60	WSMH/22-100/FBT50	5126641
27	58	100	21	62	Form "AD"	5.10	WSMH/27-100/FBT50	5126643
32	78	100	24	62	Form "AD"	6.30	WSMH/32-100/FBT50	5126644
40	88	100	27	62	Form "AD"	6.80	WSMH/40-100/FBT50+	5126645
16	38	160	17	122	Form "AD"	4.70	WSMH/16-160/FBT50	5126646
22	48	160	19	122	Form "AD"	5.40	WSMH/22-160/FBT50	5126647
27	58	160	21	122	Form "AD"	6.30	WSMH/27-160/FBT50	5126648
32	78	160	24	122	Form "AD"	8.40	WSMH/32-160/FBT50	5126649
40	88	160	27	122	Form "AD"	9.65	WSMH/40-160/FBT50+	5126650

Ersatzteile und Zubehör / Spare Parts & Accessories: Pg.D8 Pg.E3 Pg.E4 Pg.E4 Pg.D7

- Kühlbohrung an der Stirnseite Standard bei allen Grundhaltern
- + ID = Ø 40, d = Ø 60 Mit 4 zusätzlichen Gewindebohrungen nach DIN 2079
- Im Lieferumfang enthalten: Mitnehmersteine, Fräseranzugsschraube und Spanschrauben (DIN 912)
- * Im Lieferumfang enthalten: Spanschrauben (DIN 912 & DIN 6367)
- Coolant bore on the pilot face (holder with Form "AD") as standard for all holders
- + ID = Ø 40, d = Ø 60 with additional 4 screw holes to DIN 2079 and with locking screw (DIN 6367) for Ø40
- Delivery includes: Drive keys, clamping screw and locking screw (DIN 912)
- * Delivery includes: Locking screw (both DIN 912 & DIN 6367)

Kontrolldorn
Test Arbor



FBT30 ↗ ≤ 2µm					
D (mm)	A (mm)	Kühlmittelzufuhr Coolant supply	N/W (Kg)	Bezeichnung Designation	Ident No.
30	230	-	1.68	WTMM/30-230/FBT30	5126651

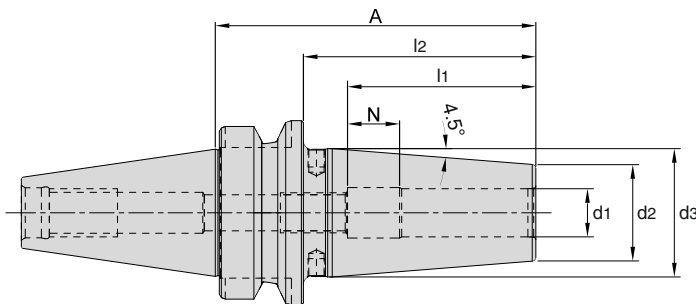
FBT40 ↗ ≤ 2µm					
D (mm)	A (mm)	Kühlmittelzufuhr Coolant supply	N/W (Kg)	Bezeichnung Designation	Ident No.
40	330	-	4.10	WTMM/40-330/FBT40	5126652

FBT50 ↗ ≤ 2µm					
D (mm)	A (mm)	Kühlmittelzufuhr Coolant supply	N/W (Kg)	Bezeichnung Designation	Ident No.
50	330	-	7.60	WTMM/50-330/FBT50	5126654

- Diese Dorne haben keinen Bund
- Kontrolldorne im Holzkasten geliefert

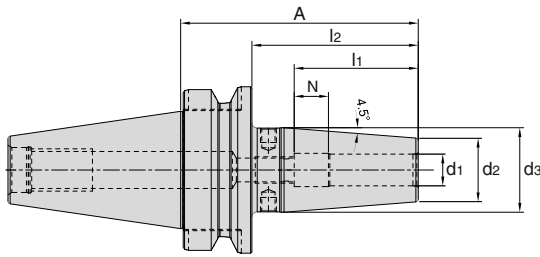
- These gauge are without flange
- Delivered in wooden box

Schrumpffutter
Shrink Fit Chuck

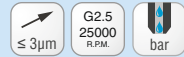


FBT30 ↗ ≤ 3µm G2.5 25000 RPM bar										
d1 (mm)	A (mm)	l2/NL (mm)	d2 (mm)	d3 (mm)	l1 (mm)	N (mm)	G	Kühlmittelzufuhr Coolant supply	Bezeichnung Designation	Ident No.
3	80	58	10	18	20			Form "AD"	WSKH/03-80/FBT30	5125280
4	80	58	10	18	20			Form "AD"	WSKH/04-80/FBT30	5125282
5	80	58	15	20	36			Form "AD"	WSKH/05-80/FBT30	5125284
6	80	58	21	27	36	8.5	M5	Form "AD"	WSKH/06-80/FBT30	5125285
8	80	58	21	27	36	9.5	M6	Form "AD"	WSKH/08-80/FBT30	5125287
10	80	58	24	32	42	9.5	M8 X 1	Form "AD"	WSKH/10-80/FBT30	5125289
12	80	58	24	32	47	13	M10 X 1	Form "AD"	WSKH/12-80/FBT30	5125290
14	80	58	27	34	47	13	M10 X 1	Form "AD"	WSKH/14-80/FBT30	5125291
16	80	58	27	34	50	13	M12 X 1	Form "AD"	WSKH/16-80/FBT30	5125292
18	90	68	33	42	50	13	M16 X 1	Form "AD"	WSKH/18-90/FBT30	5125293
20	90	68	33	42	52	13	M16 X 1	Form "AD"	WSKH/20-90/FBT30	5125294

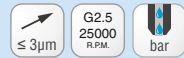
Schrumpffutter
Shrink Fit Chuck



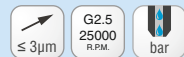
FBT40										
d1 (mm)	A (mm)	l2/NL (mm)	d2 (mm)	d3 (mm)	l1 (mm)	N (mm)	G	Kühlmittelezufuhr Coolant supply	Bezeichnung Designation	Ident No.
3	90	63	10	19	20			Form "AD"	WSKH/03-90/FBT40	5125297
4	90	63	10	19	20			Form "AD"	WSKH/04-90/FBT40	5125298
5	90	63	15	20	36			Form "AD"	WSKH/05-90/FBT40	5125300
6	90	63	21	27	36	8.5	M5	Form "AD"	WSKH/06-90/FBT40	5125301
8	90	63	21	27	36	9.5	M6	Form "AD"	WSKH/08-90/FBT40	5125302
10	90	63	24	32	42	9.5	M8 X 1	Form "AD"	WSKH/10-90/FBT40	5125303
12	90	63	24	32	47	13	M10 X 1	Form "AD"	WSKH/12-90/FBT40	5125304
14	90	63	27	34	47	13	M10 X 1	Form "AD"	WSKH/14-90/FBT40	5125305
16	90	63	27	34	50	13	M12 X 1	Form "AD"	WSKH/16-90/FBT40	5125306
18	90	63	33	42	50	13	M16 X 1	Form "AD"	WSKH/18-90/FBT40	5125308
20	90	63	33	42	52	13	M16 X 1	Form "AD"	WSKH/20-90/FBT40	5125309
25	100	73	44	52.5	58	13	M16 X 1	Form "AD"	WSKH/25-100/FBT40	5125310
32	100	73	44	53	58	13	M16 X 2	Form "AD"	WSKH/32-100/FBT40	5125312



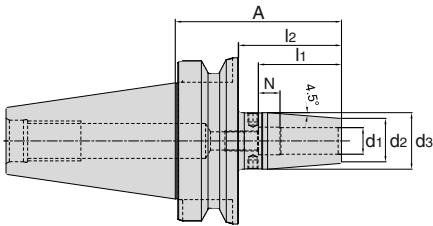
FBT40										
d1 (mm)	A (mm)	l2/NL (mm)	d2 (mm)	d3 (mm)	l1 (mm)	N (mm)	G	Kühlmittelezufuhr Coolant supply	Bezeichnung Designation	Ident No.
6	130	104	21	27	36	8.5	M5	Form "AD"	WSKH/06-130/FBT40	5125313
8	130	104	21	27	36	9.5	M6	Form "AD"	WSKH/08-130/FBT40	5125314
10	130	104	24	32	42	9.5	M8 X 1	Form "AD"	WSKH/10-130/FBT40	5125316
12	130	104	24	32	47	13	M10 X 1	Form "AD"	WSKH/12-130/FBT40	5125317
14	130	104	27	34	47	13	M10 X 1	Form "AD"	WSKH/14-130/FBT40	5125320
16	130	104	27	34	50	13	M12 X 1	Form "AD"	WSKH/16-130/FBT40	5125321
18	130	104	33	42	50	13	M16 X 1	Form "AD"	WSKH/18-130/FBT40	5125322
20	130	104	33	42	52	13	M16 X 1	Form "AD"	WSKH/20-130/FBT40	5125323
25	130	104	44	52.5	58	13	M16 X 1	Form "AD"	WSKH/25-130/FBT40	5125325
32	130	104	44	53	58	13	M16 X 2	Form "AD"	WSKH/32-130/FBT40	5125326



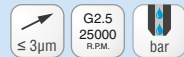
FBT40										
d1 (mm)	A (mm)	l2/NL (mm)	d2 (mm)	d3 (mm)	l1 (mm)	N (mm)	G	Kühlmittelezufuhr Coolant supply	Bezeichnung Designation	Ident No.
6	160	134	21	27	36	8.5	M5	Form "AD"	WSKH/06-160/FBT40	5125806
8	160	134	21	27	36	9.5	M6	Form "AD"	WSKH/08-160/FBT40	5125807
10	160	134	24	32	42	9.5	M8 X 1	Form "AD"	WSKH/10-160/FBT40	5125808
12	160	134	24	32	47	13	M10 X 1	Form "AD"	WSKH/12-160/FBT40	5125810
14	160	134	27	34	47	13	M10 X 1	Form "AD"	WSKH/14-160/FBT40	5125811
16	160	134	27	34	50	13	M12 X 1	Form "AD"	WSKH/16-160/FBT40	5125812
18	160	134	33	42	50	13	M16 X 1	Form "AD"	WSKH/18-160/FBT40	5125813
20	160	134	33	42	52	13	M16 X 1	Form "AD"	WSKH/20-160/FBT40	5125814
25	160	134	44	52.5	58	13	M16 X 1	Form "AD"	WSKH/25-160/FBT40	5125815
32	160	134	44	53	58	13	M16 X 2	Form "AD"	WSKH/32-160/FBT40	5125833



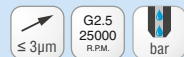
Schrumpffutter
Shrink Fit Chuck



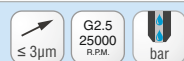
FBT50										
d1 (mm)	A (mm)	l2/NL (mm)	d2 (mm)	d3 (mm)	l1 (mm)	N (mm)	G	Kühlmittelzufuhr Coolant supply	Bezeichnung Designation	Ident No.
6	100	62	21	27	36	8.5	M5	Form "AD"	WSKH/06-100/FBT50	5125918
8	100	62	21	27	36	9.5	M6	Form "AD"	WSKH/08-100/FBT50	5125919
10	100	62	24	32	42	9.5	M8 X 1	Form "AD"	WSKH/10-100/FBT50	5125920
12	100	62	24	32	47	13	M10 X 1	Form "AD"	WSKH/12-100/FBT50	5125921
14	100	62	27	34	47	13	M10 X 1	Form "AD"	WSKH/14-100/FBT50	5125922
16	100	62	27	34	50	13	M12 X 1	Form "AD"	WSKH/16-100/FBT50	5125923
18	100	62	33	42	50	13	M16 X 1	Form "AD"	WSKH/18-100/FBT50	5125924
20	100	62	33	42	52	13	M16 X 1	Form "AD"	WSKH/20-100/FBT50	5125925
25	100	62	44	52.5	58	13	M16 X 1	Form "AD"	WSKH/25-100/FBT50	5125926
32	100	62	44	53	58	13	M16 X 2	Form "AD"	WSKH/32-100/FBT50	5125927



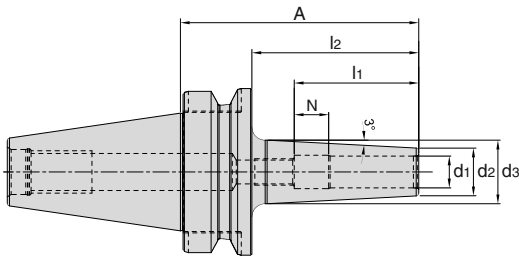
FBT50										
d1 (mm)	A (mm)	l2/NL (mm)	d2 (mm)	d3 (mm)	l1 (mm)	N (mm)	G	Kühlmittelzufuhr Coolant supply	Bezeichnung Designation	Ident No.
6	130	82	21	27	36	8.5	M5	Form "AD"	WSKH/06-130/FBT50	5125928
8	130	82	21	27	36	9.5	M6	Form "AD"	WSKH/08-130/FBT50	5125929
10	130	82	24	32	42	9.5	M8 X 1	Form "AD"	WSKH/10-130/FBT50	5125930
12	130	82	24	32	47	13	M10 X 1	Form "AD"	WSKH/12-130/FBT50	5125931
14	130	82	27	34	47	13	M10 X 1	Form "AD"	WSKH/14-130/FBT50	5125932
16	130	82	27	34	50	13	M12 X 1	Form "AD"	WSKH/16-130/FBT50	5125933
18	130	82	33	42	50	13	M16 X 1	Form "AD"	WSKH/18-130/FBT50	5125936
20	130	82	33	42	52	13	M16 X 1	Form "AD"	WSKH/20-130/FBT50	5125937
25	130	82	44	52.5	58	13	M16 X 1	Form "AD"	WSKH/25-130/FBT50	5125940
32	130	82	44	53	58	13	M16 X 1	Form "AD"	WSKH/32-130/FBT50	5125941






FBT50										
d1 (mm)	A (mm)	l2/NL (mm)	d2 (mm)	d3 (mm)	l1 (mm)	N (mm)	G	Kühlmittelzufuhr Coolant supply	Bezeichnung Designation	Ident No.
6	160	122	21	27	36	8.5	M5	Form "AD"	WSKH/06-160/FBT50	5125942
8	160	122	21	27	36	9.5	M6	Form "AD"	WSKH/08-160/FBT50	5125944
10	160	122	24	32	42	9.5	M8 X 1	Form "AD"	WSKH/10-160/FBT50	5125945
12	160	122	24	32	47	13	M10 X 1	Form "AD"	WSKH/12-160/FBT50	5125947
14	160	122	27	34	47	13	M10 X 1	Form "AD"	WSKH/14-160/FBT50	5125948
16	160	122	27	34	50	13	M12 X 1	Form "AD"	WSKH/16-160/FBT50	5125949
18	160	122	33	42	50	13	M16 X 1	Form "AD"	WSKH/18-160/FBT50	5125952
20	160	122	33	42	52	13	M16 X 1	Form "AD"	WSKH/20-160/FBT50	5125955
25	160	122	44	52.5	58	13	M16 X 1	Form "AD"	WSKH/25-160/FBT50	5125956
32	160	122	44	53	58	13	M16 X 1	Form "AD"	WSKH/32-160/FBT50	5125957



Schlanke Schrumpffutter
Slim Shrink Fit Chuck



FBT40												
d1 (mm)	A (mm)	l2/NL (mm)	d2 (mm)	d3 (mm)	l1 (mm)	N (mm)	G	Kühlmittelzufuhr Coolant supply	Bezeichnung Designation	Ident No.		
3	90	63	9	13	20			Form "AD"	WSSH/03-90/FBT40	5126719		
4	90	63	10	14	20			Form "AD"	WSSH/04-90/FBT40	5126720		
6	90	63	12	18	36	8.5	M5	Form "AD"	WSSH/06-90/FBT40	5126723		
8	90	63	14	20	36	9.5	M6	Form "AD"	WSSH/08-90/FBT40	5126725		
10	90	63	16	22	42	9.5	M8 X 1	Form "AD"	WSSH/10-90/FBT40	5126726		
12	90	63	18	24	47	13.0	M10 X 1	Form "AD"	WSSH/12-90/FBT40	5126729		
16	90	63	22	28	50	13.0	M12 X 1	Form "AD"	WSSH/16-90/FBT40	5126732		
20	90	63	27	33	52	13.0	M16 X 1	Form "AD"	WSSH/20-90/FBT40	5126733		

Zubehör

Accessories

für Zubehör siehe Bilz "CNC Werkzeughalter" Katalog.

Please refer our CNC Tool Holders catalogue for ordering the accessories.



**BILZ WERKZEUGFABRIK
GmbH & Co. KG**
Vogelsangstr. 8
73760 Ostfildern
Deutschland / Germany
Telefon +49 711 348 01 - 0
Telefax +49 711 348 12 56
info@bilz.de
www.bilz.com



*Produktions- und Vertriebsstandorte der LEITZ-Group
Production and sales locations of the LEITZ Group*

- **Bilz**
- **Boehlerit**
- **Leitz**