

Driven & Static Tool Holder

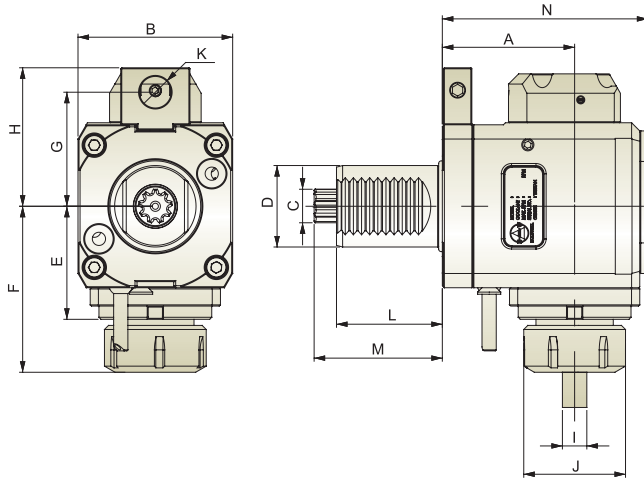


Radial Tool Holder (Internal Coolant)

DIN 5482

- Tool Holder is produced in accordance with DIN 69880.
- Driven Coupling is according to DIN 5482.
- ER Collet is according to DIN 6499.
- For left hand and right hand turret.

- ⚙ Gear Ratio : 1 : 1
- ⚙ R.P.M. : Max. 4,000 RPM
- ⚙ Internal Coolant : 70 bar



Unit : mm

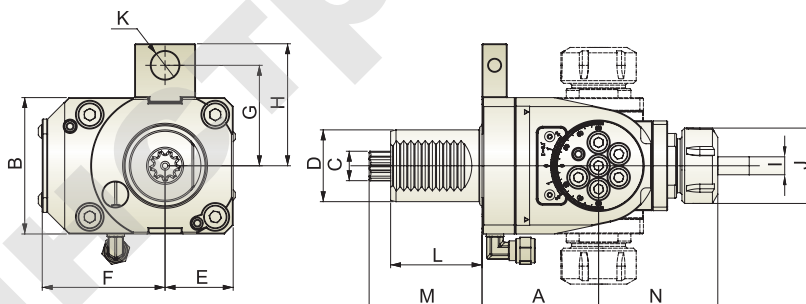
Model No.	A	B	C	D	E	F	G	H	I	J	K	L	M	N	N.W.(KG)
THB-B05.65-40CI	65	76	B17*14	40	49	81.5	56/63/70	68/75/82	ER32 (3~20)	50	16	51	63	101	5.3

※ Further option : 6000 RPM

Angle Adjustable Tool Holder (External Coolant)

- Cutting angle can be set from +90 to -90 degree for various applications.

- ⚙ Gear Ratio : 1 : 1
- ⚙ R.P.M. : Max. 4,000 RPM



Unit : mm

Model No.	A	B	C	D	E	F	G	H	I	J	K	L	M	N	N.W.(KG)
THB-E04.65-40C	65	76	B17*14	40	38	68.5	56/63/70	68/75/82	ER25 (2~16)	42	16	51	63	66.5	5.6
THB-E04.85-40C	85	76	B17*14	40	38	68.5	56/63/70	68/75/82	ER25 (2~16)	42	16	51	63	66.5	5.6

※ Optional Accessories : Hooker Spanner.