

Driven & Static Tool Holder

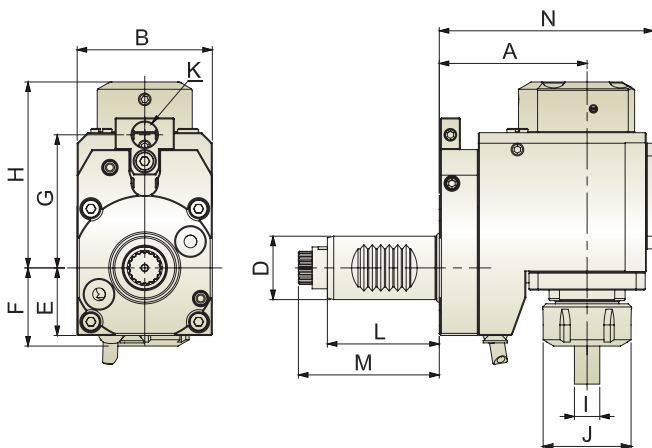


Radial Offset Tool Holder (Internal Coolant)

DIN 5480

- Tool Holder is produced in accordance with DIN 69880.
- Driven Coupling is according to DIN 5480.
- ER Collet is according to DIN6499.
- For left hand and right hand turret.

- ⚙ Gear Ratio : 1 : 1
- ⚙ R.P.M. : Max. 4,000 RPM
- ⚙ Internal Coolant : 70 bar



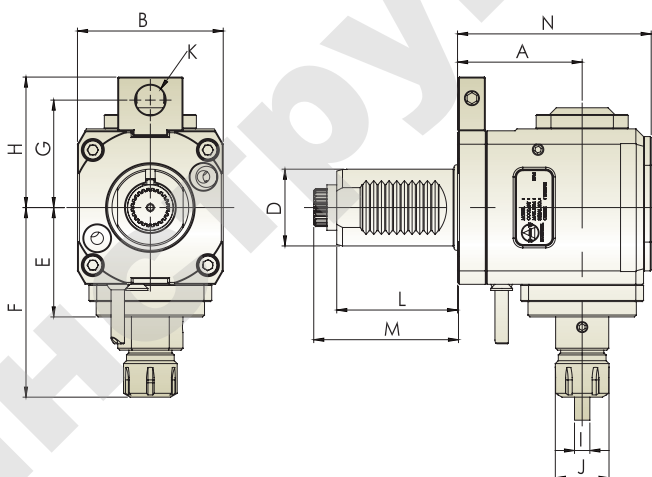
Unit : mm

Model No.	A	B	D	E	F	G	H	I	J	K	L	M	N	N.W.(KG)
THB-D04.70-30BI	70	64	30	32	37	40/63	97	ER25 (2~16)	42	12	55	66.7	101.5	4.0
THB-D04.100-30BI	100	64	30	32	37	40/63	97	ER25 (2~16)	42	12	55	66.7	131.5	5.0
THB-D05.90-40BI	90	80	40	38	31.5	63/70	124	ER32 (3~20)	50	16	63	75	125.5	7.2

※ Further option : 6000 RPM

Radial ER Tapping Tool Holder (External Coolant)

- ⚙ Gear Ratio : 1 : 1
- ⚙ R.P.M. : Max. 3,000 RPM



Unit : mm

Model No.	A	B	D	E	F	G	H	I	J	K	L	M	N	N.W.(KG)
THB-B15.65-40B	65	76	40	57	99	56/63/70	68/75/82	M3~M12	28	16	68	52	101	4.9
THB-B15.85-40B	85	76	40	57	99	56/63/70	68/75/82	M3~M12	28	16	68	52	121	5.8
THB-B15.100-40B	100	76	40	57	99	56/63/70	68/75/82	M3~M12	28	16	68	52	136	6.4