



HOLD WELL

HOLD WELL INDUSTRIAL CO., LTD.



Driven & Static
Driven & Tool Holder
Tool Holder

Driven & Static Tool Holder



ISO 9001:2008

Driven & Static Tool Holder



Contents

1. Driven Coupling Type

VDI system



DIN 1809



DIN 5480



DIN 5482



SPUR MT TOEM
(BARUFFALDI)



HAAS

BMT system



1809



5480

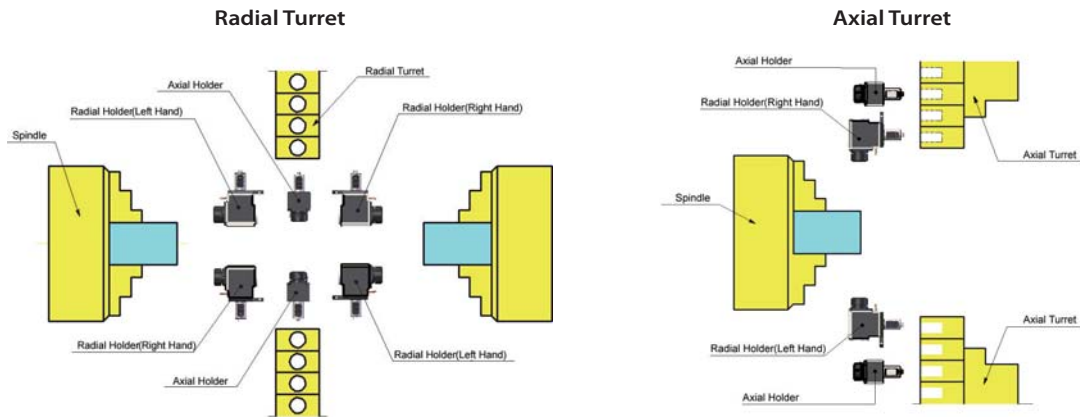


MORI SEIKI

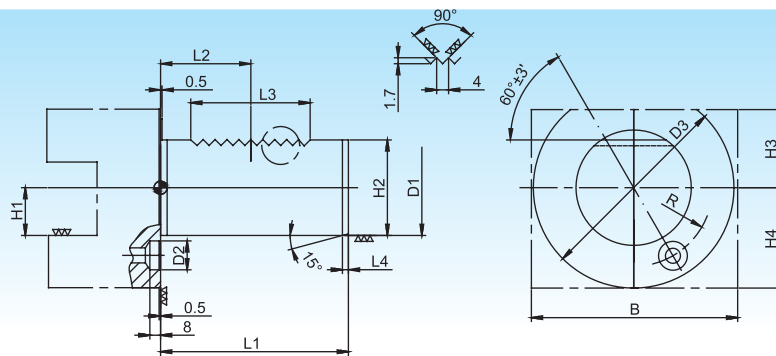
Driven & Static Tool Holder



2. Turret Type



3. Driven Tool Holder is produced in accordance with DIN69880



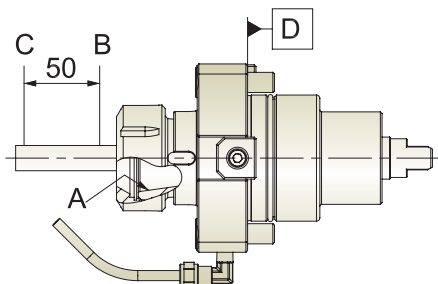
Unit : mm

D1 h6	D2	D3	H1 max	H2 ±0.05	H3 min	R ±0.02	L1 max	L2 ±0.05	L3 max	L4 max
20	10	50	16	18	25	18	40	21.7	24	2
25	10	58	16	23.5	25	21	48	21.7	24	2
30	14	68	20	27	28	25	55	29.7	40	2
40	14	83	25	36	32.5	32	63	29.7	40	3
50	16	98	32	45	35	37	78	35.7	48	3
60	16	123	32	55	42.5	48	94	43.7	56	4

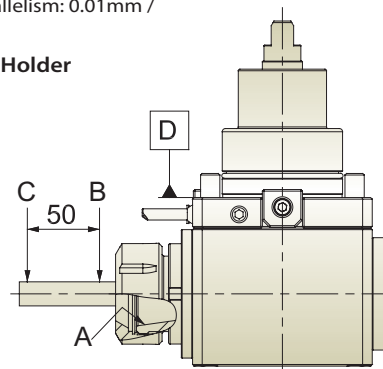
4. Accuracy

- Cavity at Bore (A) : 0.003mm
- Test Bar at Face (B) : 0.01mm
- Test Bar at 50 mm (C) : 0.02mm /
- Test Bar 50 mm for D's Parallelism: 0.01mm /

Axial Tool Holder



Radial Tool Holder



Driven & Static Tool Holder



5. Instruction Manual for VDI Driven Tool Holder (Internal Coolant)

※ CAUTIONS :

- Driven Tool Holders with internal coolant through the spindle should never run without coolant. The coolant should flow through the tool before running. Running in dry condition damages the internal seals and cause overheating.
- To avoid premature wear and damage to the seal system, we recommend to filter the coolant properly.
- Never run the tool above max. permissible RPM.
- Never supply the coolant above max. permissible water pressure
- Please use the through-coolant toolings, coolant collet or coolant nut.
- Please check if there is no block or jam at the internal / external coolant exit.
- Please switch off the external coolant system if only internal coolant function is need.
- How to switch off external coolant system : Please use the screw to block the external coolant exit shown as A in Fig.1 & Fig.2.
- Any hit with hammers and similar items on the surface is seriously forbidden.

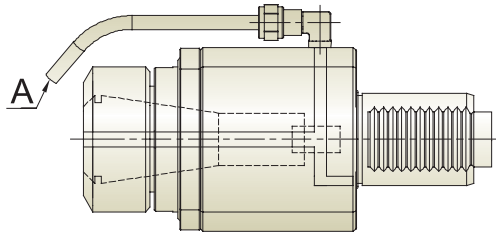


Fig.1

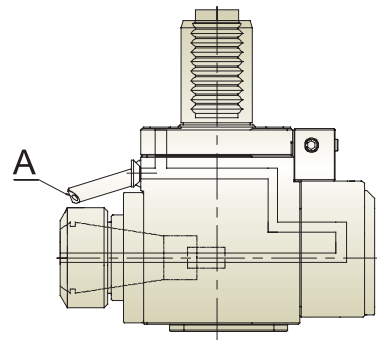


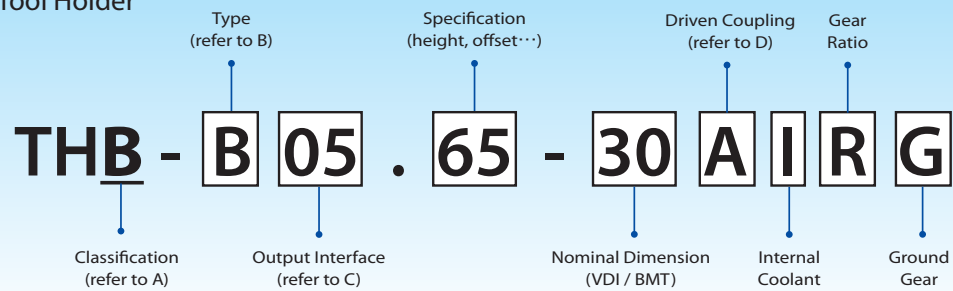
Fig.2

※ Recommendations :

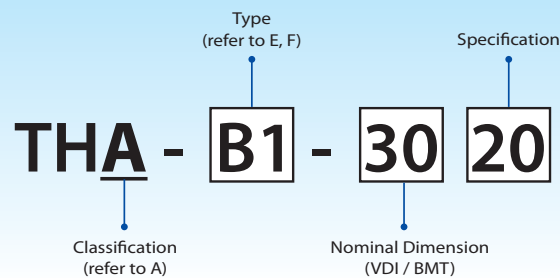
- In initial Start-up, please run the holder properly without any toolings for one hour to reduce the internal friction. Max. RPM in the first operation hour should not exceed 70 % of the Max. permissible RPM.

6. Code Standard

※ Driven Tool Holder



※ Static Tool Holder



Driven & Static Tool Holder



A. Classification of Tool Holder

A	VDI Static Tool Holder	L	DW BMT Static Tool Holder
B	VDI Driven Tool Holder	M	DW BMT Driven Tool Holder
G	MORI SEIKI BMT Driven Tool Holder		

B. Type of Driven Tool Holder

A	Axial Tool Holder	D	Radial Offset Tool Holder	S	Axial Swivel Gear Hobber Tool Holder
B	Radial Tool Holder	E	Angle Adjustable Tool Holder	T	Radial Swivel Gear Hobber Tool Holder
C	Axial Offset Tool Holder	H	Radial Double Head Tool Holder		

C. Output Interface

01	ER11	09	Female Thread ER16	19	Tapping WF12
02	ER16	10	Female Thread ER20	20	Tapping WF20
03	ER20	11	Female Thread ER25	21	Tapping WF33
04	ER25	12	Female Thread ER32	22	Face Milling FMA25.4
05	ER32	13	Female Thread ER40	23	Face Milling FMA31.75
06	ER40	14	Female Thread ER50	24	Face Milling FMB22
07	ER50	15	ER Tapping TER20	25	Face Milling FMB27
08	Female Thread ER11	16	ER Tapping TER32	26	Face Milling FMB32

D. Driven Coupling

A	DIN 1809	C	DIN 5482	E	Hass 104
B	DIN 5480	D	MT (Baruffaldi)	F	Hass 117

E. VDI Static Tool Holder

B1	Radial Tool Holder right hand, short	BC1	Radial-Axial Tool Holder right hand	E4	ER Collet Chuck Tool Holder
B2	Radial Tool Holder left hand, short	BC2	Radial-Axial Tool Holder left hand	F1	Morse Taper Tool Holder
B3	Radial Tool Holder Overhead right hand, short	BC3	Radial-Axial Tool Holder Overhead right hand	G1	Quick Locking Drill Chuck
B4	Radial Tool Holder Overhead left hand, short	BC4	Radial-Axial Tool Holder Overhead left hand	T1	Radial Boring Bar Tool Holder
C1	Axial Tool Holder right hand, short	D1	Multiple Tool Holder	TA	Test Arbor
C2	Axial Tool Holder left hand, short	D2	Multiple Tool Holder	Z2	Plug
C3	Axial Tool Holder Overhead right hand, short	E1	Tool Holder for U Drill		
C4	Axial Tool Holder Overhead left hand, short	E2	Side Lock Tool Holder		




F. BMT Static Tool Holder

B	Radial Tool Holder (OD)	E	Axial Tool Holder (ID)	TA	Test Arbor
C	Axial Tool Holder (OD)	F	Morse Taper Tool Holder	Z	Plug
BC	Radial-Axial Tool Holder	G	Quick Locking Drill Chuck		
D	Multiple Tool Holder	T	Radial Tool Holder (ID)		

Driven & Static Tool Holder



Contents

Driven Tool Holder	Product	Page
 <p>DIN 1809</p>	Axial Tool Holder (External Coolant)	1
	Axial ER Tapping Tool Holder (External Coolant)	
	Axial Offset Tool Holder (External Coolant)	2
	Axial Offset Tool Holder (Internal Coolant)	
	Radial Tool Holder (External Coolant)	3
	Radial Tool Holder (Internal Coolant)	
	Radial Offset Tool Holder (External Coolant)	4
	Radial Offset Tool Holder (Internal Coolant)	
	Radial ER Tapping Tool Holder (External Coolant)	5
	Angle Adjustable Tool Holder (External Coolant)	
	Radial Swivel Gear Hobber Tool Holder (External Coolant)	6
 <p>DIN 5480</p>	Axial Tool Holder (External Coolant)	
	Axial ER Tapping Tool Holder (External Coolant)	7
	Axial Offset Tool Holder (External Coolant)	
	Axial Offset Tool Holder (Internal Coolant)	8
	Radial Tool Holder (External Coolant)	
	Radial Tool Holder (Internal Coolant)	9
	Radial Offset Tool Holder (External Coolant)	
	Radial Offset Tool Holder (Internal Coolant)	10
	Radial ER Tapping Tool Holder (External Coolant)	
	Angle Adjustable Tool Holder (External Coolant)	11
	Radial Swivel Gear Hobber Tool Holder (External Coolant)	
 <p>DIN 5482</p>	Axial Tool Holder (External Coolant)	12
	Radial Tool Holder (External Coolant)	
	Radial Tool Holder (Internal Coolant)	13
	Angle Adjustable Tool Holder (External Coolant)	

Driven & Static Tool Holder



Driven Tool Holder	Product	Page
--------------------	---------	------



**SPUR MT TOEM
(BARUFFALDI)**

Axial Tool Holder (External Coolant)	14
Axial ER Tapping Tool Holder (External Coolant)	
Axial Offset Tool Holder (External Coolant)	15
Axial Offset Tool Holder (Internal Coolant)	
Radial Tool Holder (External Coolant)	16
Radial Tool Holder (Internal Coolant)	
Radial Offset Tool Holder (External Coolant)	17
Radial Offset Tool Holder (Internal Coolant)	
Radial ER Tapping Tool Holder (External Coolant)	18
Angle Adjustable Tool Holder (External Coolant)	
Radial Swivel Gear Hobber Tool Holder (External Coolant)	19



HAAS

Axial Tool Holder (External Coolant)	
Axial Female Thread Tool Holder (External Coolant)	20
Radial Tool Holder (External Coolant)	
Radial Tool Holder (Internal Coolant)	21
Radial Female Thread Tool Holder (External Coolant)	
Radial ER Tapping Tool Holder (External Coolant)	22
Angle Adjustable Tool Holder (External Coolant)	



**BMT-1809
(DAEWOO DOOSAN)**

Axial Tool Holder (External Coolant)	23
Radial Tool Holder (External Coolant)	

Driven & Static Tool Holder



Driven Tool Holder

Product

Page



BMT-5480

Axial Tool Holder (External Coolant)
Radial Tool Holder (External Coolant)

24



MORI SEIKI

Axial Tool Holder (External Coolant)
Radial Tool Holder (External Coolant)

25

Customized Products - Tool Holder

Radial Tapping Tool Holder (External Coolant)

26

Customized Products - Modular Tool Holder

Radial Tool Holder (External Coolant)

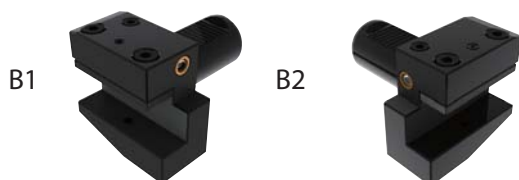
45° Tool Holder (External Coolant)

27

Driven & Static Tool Holder



Static Tool Holder	Product	Page
--------------------	---------	------



B1

B2



THA-B

Radial Tool Holder

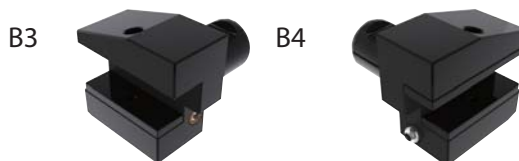
28

Radial Tool Holder form B1 right hand, short

Radial Tool Holder form B2 left hand, short

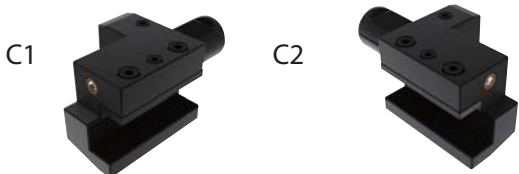
Radial Tool Holder Overhead form B3 right hand, short

Radial Tool Holder Overhead form B4 left hand, short



B3

B4



C1

C2



THA-C

Axial Tool Holder

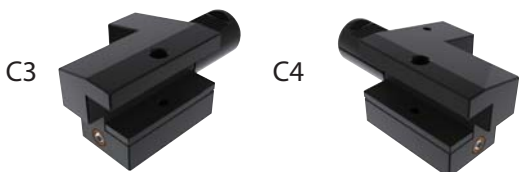
29

Axial Tool Holder form C1 right hand, short

Axial Tool Holder form C2 left hand, short

Axial Tool Holder Overhead form C3 right hand, short

Axial Tool Holder Overhead form C4 left hand, short



C3

C4



B1/C1

B2/C2



THA-BC

Radial-Axial Tool Holder

30

Radial-Axial Tool Holder form B1/C1 right hand

Radial-Axial Tool Holder form B2/C2 Left hand

Radial-Axial Tool Holder Overhead form B3/C3 right hand

Radial-Axial Tool Holder Overhead form B4/C4 left hand



B3/C3

B4/C4



D1

D2



THA-D

Multiple Tool Holder

31

Multiple Tool Holder form D1

Multiple Tool Holder form D2

Driven & Static Tool Holder



Static Tool Holder	Product	Page
--------------------	---------	------

E1

E2

E4



THA-E

Tool Holder

32

Tool Holder form E1 for U Drill

Side Lock Tool Holder form E2

ER Collet Chuck Tool Holder form E4

F

G



THA-F

Morse Taper Tool Holder

33

THA-G

Quick Locking Drill Chuck

T

TA

Z



THA-T

Radial Boring Bar Tool Holder

34

THA-TA

Test Arbor

THA-Z

Plug

B

C

T



THL-B

Radial Tool Holder - BMT

35

THL-C

Axial Tool Holder - BMT

THL-T

Tool Holder - BMT (Internal Coolant)


Driven & Static Tool Holder

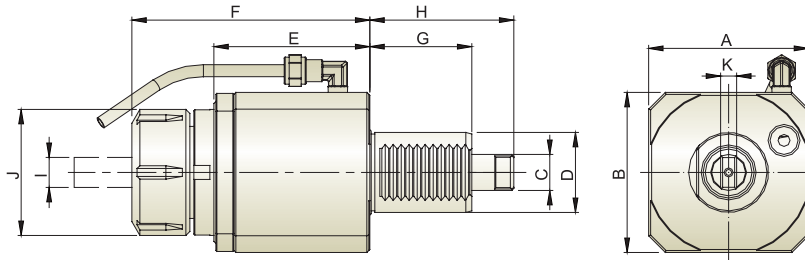


Axial Tool Holder (External Coolant)

DIN 1809

- Tool Holder is produced in accordance with DIN 69880.
- Driven Coupling is according to DIN 1809.
- ER Collet is according to DIN 6499.
- Supply external coolant.
- For left hand and right hand turret.

 R.P.M. : Max. 6,000 RPM

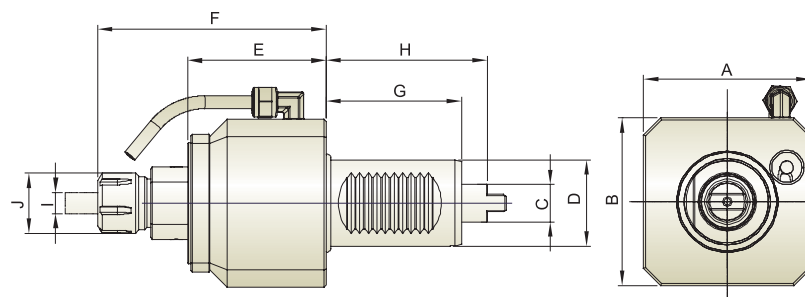


Unit : mm

Model No.	A	B	C	D	E	F	G	H	I	J	K	N.W.(KG)
THB-A04-30A	62	62	12	30	60.5	87	45	62	ER25 (2~16)	42	6	2.0
THB-A05-30A	64	64	12	30	64	98	45	62	ER32 (3~20)	50	6	2.3
THB-A05-40A	78	78	18	40	63	94	51	72	ER32 (3~20)	50	8	3.4
THB-A06-40A	80	80	18	40	78	119	51	72	ER40 (4~26)	63	8	4.3
THB-A06-50A	86	86	25	50	82	124	68	92	ER40 (4~26)	63	13	5.5
THB-A07-60A	104	104	27.8	60	110.5	152	78	110	ER50 (12~34)	78	14	9.6

Axial ER Tapping Tool Holder (External Coolant)

 R.P.M. : Max. 3,000 RPM



Unit : mm

Model No.	A	B	C	D	E	F	G	H	I	J	N.W.(KG)
THB-A15-40A	78	78	18	40	63	106	51	72	M3~M12	28	3

Driven & Static Tool Holder

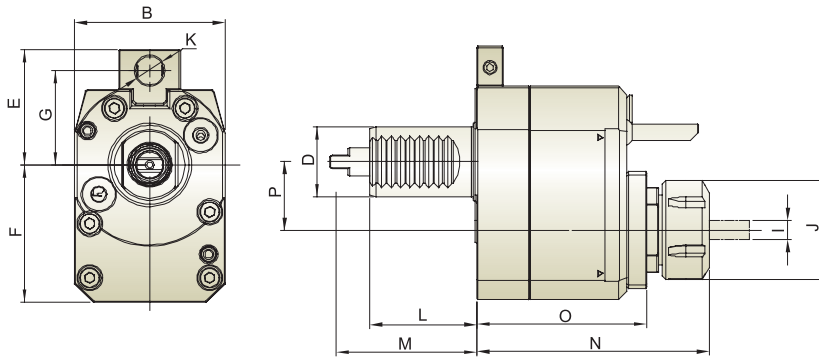


Axial Offset Tool Holder (External Coolant)

DIN 1809

- Tool Holder is produced in accordance with DIN 69880.
- Driven Coupling is according to DIN 1809.
- ER Collet is according to DIN 6499.
- For left hand and right hand turret.

- ⚙ Gear Ratio : 1 : 1
- ⚙ R.P.M. : Max. 5,000 RPM

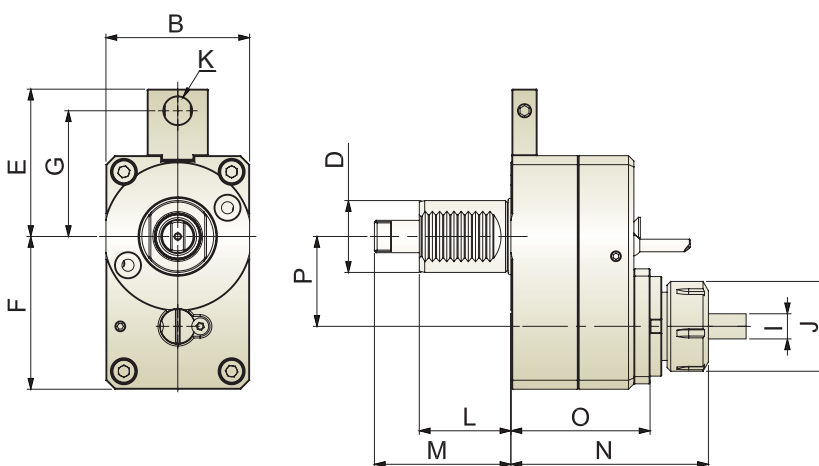


Unit : mm

Model No.	B	D	E	F	G	I	J	K	L	M	N	O	P	N.W.(KG)
THB-C04.29-30A	64	30	57	58.5	48	ER25 (2~16)	42	12	45	62	99.5	73	29	3.0
THB-C05.50-40A	80	40	75/82	85	63/70	ER32 (3~20)	50	16	51	72	110	77.5	50	6.0

Axial Offset Tool Holder (Internal Coolant)

- ⚙ Gear Ratio : 1 : 1
- ⚙ R.P.M. : Max. 5,000 RPM
- ⚙ Internal Coolant : 70 bar



Unit : mm

Model No.	B	D	E	F	G	I	J	K	L	M	N	O	P	N.W.(KG)
THB-C04.29-30AI	64	30	57	58.5	48	ER25 (2~16)	42	12	45	62	109.5	83	29	3.3

Driven & Static Tool Holder



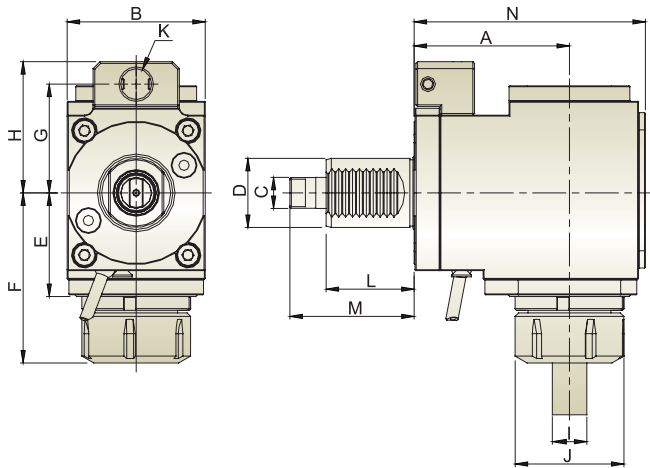
Radial Tool Holder (External Coolant)

DIN 1809

- Tool Holder is produced in accordance with DIN 69880.
- Driven Coupling is according to DIN 1809.
- ER Collet is according to DIN 6499.
- For left hand and right hand turret.

Gear Ratio : 1 : 1

R.P.M. : Max. 4,000 RPM

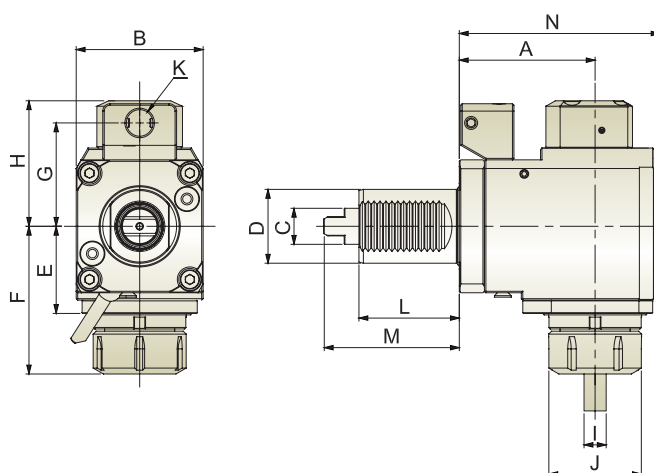


Unit : mm

Model No.	A	B	C	D	E	F	G	H	I	J	K	L	M	N	N.W.(KG)
THB-B04.55-30A	55	64	12	30	39.5	66	40/63	50/73	ER25 (2~16)	42	12	45	62	86.5	3.0
THB-B05.65-30A	65	64	12	30	47	75	40/63	50/73	ER32 (3~20)	50	12	45	62	101	3.7
THB-B05.65-40A	65	76	18	40	49	81.5	63/70	75/82	ER32 (3~20)	50	16	51	72	101	5.1
THB-B06.90-40A	90	80	18	40	60	98.5	63/70	73/80	ER40 (4~26)	63	16	51	72	134	8.1
THB-B06.145-40A	145	80	18	40	60	98.5	63/70	73/80	ER40 (4~26)	63	16	51	72	189	10.9
THB-B06.92-50A	92	86	25	50	60	100	70/88	83/101	ER40 (4~26)	63	18	68	92	136	9

※ Further option : 6000 RPM

Radial Tool Holder (Internal Coolant)



Gear Ratio : 1 : 1

R.P.M. : Max. 4,000 RPM

Internal Coolant : 70 bar



Unit : mm

Model No.	A	B	C	D	E	F	G	H	I	J	K	L	M	N	N.W.(KG)
THB-B04.65-30AI	55	64	12	30	39.5	66	40/63	68	ER25 (2~16)	42	12	45	62	86.5	3.2
THB-B05.65-30AI	65	64	12	30	47	75	40/63	72	ER32 (3~20)	50	12	45	62	101	3.9
THB-B05.65-40AI	65	76	18	40	49	81.5	63/70	74	ER32 (3~20)	50	16	51	72	101	5.1

※ Further option : 6000 RPM

Driven & Static Tool Holder

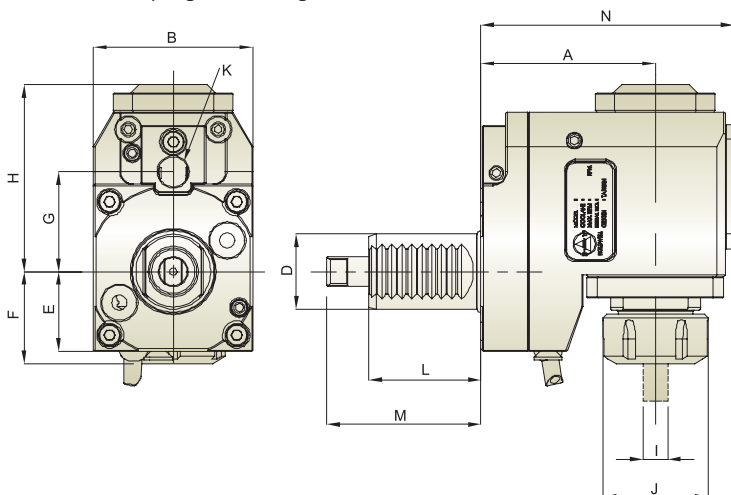


Radial Offset Tool Holder (External Coolant)

DIN 1809

- Tool Holder is produced in accordance with DIN 69880.
- Driven Coupling is according to DIN 1809.
- ER Collet is according to DIN 6499.
- For left hand and right hand turret.

- ⚙ Gear Ratio : 1 : 1
- ⚙ R.P.M. : Max. 4,000 RPM



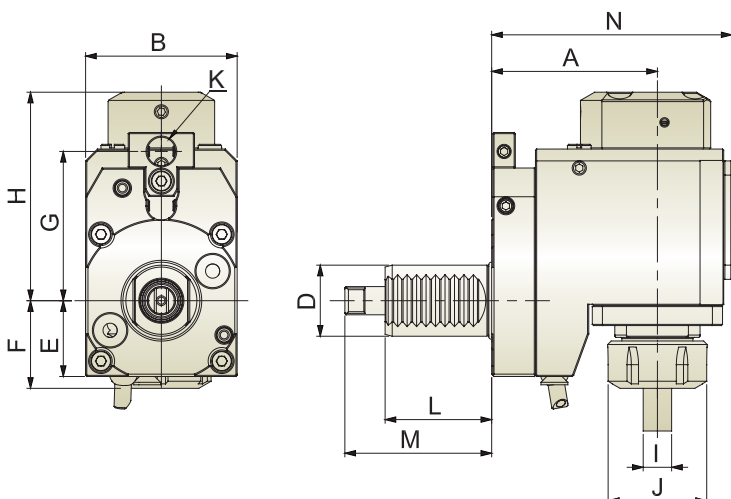
Unit : mm

Model No.	A	B	D	E	F	G	H	I	J	K	L	M	N	N.W.(KG)
THB-D04.70-30A	70	64	30	32	37	40/63	75	ER25 (2~16)	42	12	45	62	101.5	4.0
THB-D05.90-40A	90	80	40	38	31.5	63/70	102	ER32 (3~20)	50	16	51	72	125.5	7.2
THB-D07.102-60A	102	104	60	54	75	89	116	ER50 (12~34)	78	16	78	110	154	14

※ Further option : 6000 RPM

Radial Offset Tool Holder (Internal Coolant)

- ⚙ Gear Ratio : 1 : 1
- ⚙ R.P.M. : Max. 4,000 RPM
- ⚙ Internal Coolant : 70 bar



Unit : mm

Model No.	A	B	D	E	F	G	H	I	J	K	L	M	N	N.W.(KG)
THB-D04.70-30AI	70	64	30	32	37	40/63	97	ER2542 (2~16)	42	12	45	62	101.5	4.0
THB-D05.90-40AI	90	80	40	38	31.5	63/70	124	ER3250 (3~20)	50	16	51	72	125.5	7.2

※ Further option : 6000 RPM

Driven & Static Tool Holder



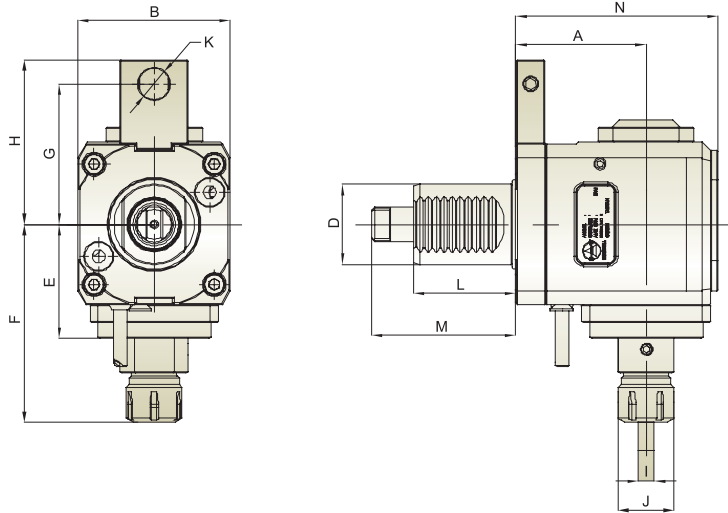
Radial ER Tapping Tool Holder (External Coolant)

DIN 1809

- Tool Holder is produced in accordance with DIN 69880.
- Driven Coupling is according to DIN 1809.
- ER Collet is according to DIN 6499.
- For left hand and right hand turret.

Gear Ratio : 1 : 1

R.P.M. : Max. 3,000 RPM



Unit : mm

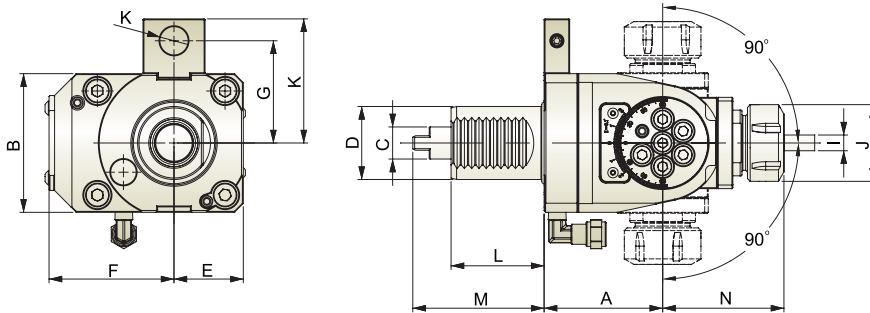
Model No.	A	B	D	E	F	G	H	I	J	K	L	M	N	N.W.(KG)
THB-B15.65-40A	65	76	40	57	99	56/6370	68/75/82	M3~M12	28	16	51	72	101	4.9

Angle Adjustable Tool Holder (External Coolant)

- Cutting angle can be set from +90 to -90 degree for various applications.

Gear Ratio : 1 : 1

R.P.M. : Max. 4,000 RPM



Unit : mm

Model No.	A	B	C	D	E	F	G	H	I	J	K	L	M	N	N.W.(KG)
THB-E04.65-40A	65	76	18	40	38	68.5	63/70	75/82	ER25 (2~16)	42	16	51	68	66.5	4.65

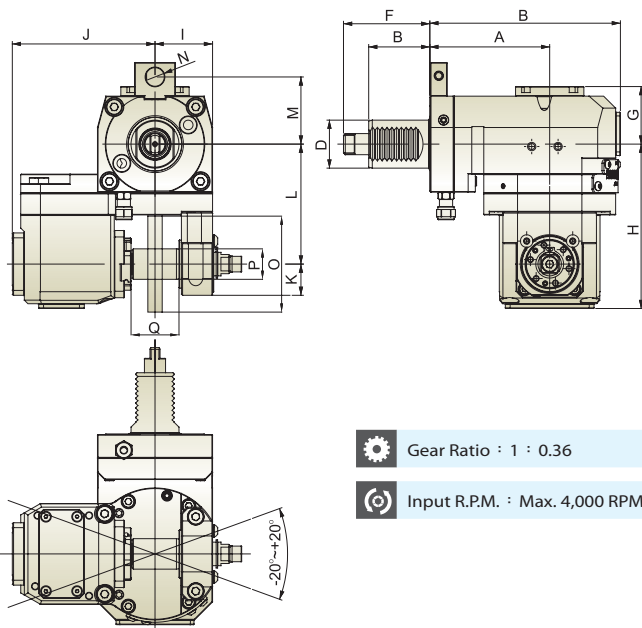
※ Optional Accessories : Hooker Spanner.



Driven & Static Tool Holder



Radial Swivel Gear Hobber Tool Holder (External Coolant)

DIN 1809



-  Gear Ratio : 1 : 0.36
-  Input R.P.M. : Max. 4,000 RPM

- Tool Holder is produced in accordance with DIN 69880.
- Driven Coupling is according to DIN 1809.
- For left hand and right hand turret.
- Cutting angle can be set from +20 to -20 degree for various applications.
- Suitable for machining Spur Gear and Bevel Gear.




Unit : mm

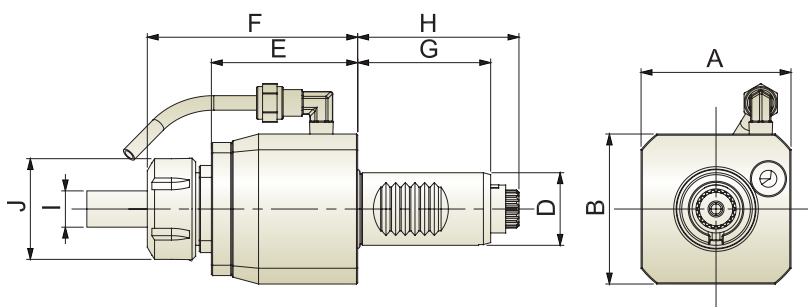
Model No.	A	B	D	E	F	G	H	I	J	K	L	M	N	O	P	Q	N.W.(KG)
THB-T29.100 -40AR0.36	100	159	40	51	68	48	137	48	119	26	100	56/63/70	15.5	80	22/25.4/27/31.75	40	11.7

Axial Tool Holder (External Coolant)

DIN 5480

- Tool Holder is produced in accordance with DIN 69880.
- Driven Coupling is according to DIN 5480.
- ER Collet is according to DIN6499.
- For left hand and right hand turret.

 R.P.M. : Max. 6,000 RPM



Unit : mm

Model No.	A	B	D	E	F	G	H	I	J	N.W.(KG)
THB-A02-20B	30	30	20	49	74	40	46.5	ER16 (1~10)	32	1.1
THB-A04-30B	62	62	30	60.5	87	55	66.7	ER25 (2~16)	42	2.0
THB-A05-40B	78	78	40	63	94	63	75	ER32 (3~20)	50	4.0
THB-A06-50B	86	86	50	82	124	78	92.7	ER40 (4~26)	63	5.5

Driven & Static Tool Holder

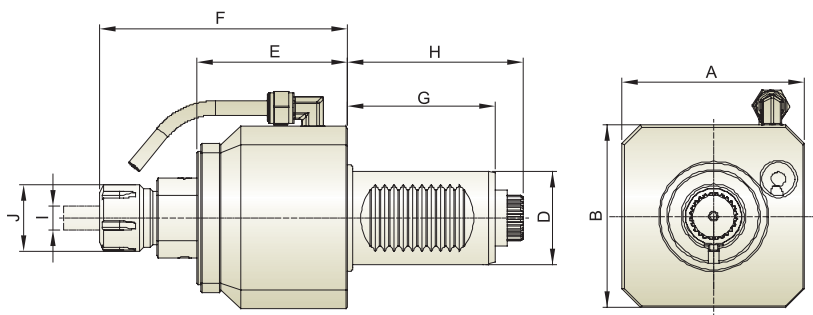


Axial ER Tapping Tool Holder (External Coolant)

DIN 5480

- Tool Holder is produced in accordance with DIN 69880.
- ER Collet is according to DIN6499.
- Driven Coupling is according to DIN 5480.
- For left hand and right hand turret.

R.P.M. : Max. 3,000 RPM



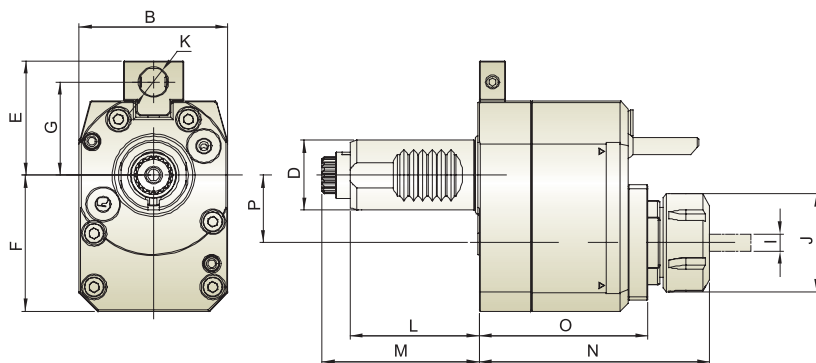
Unit : mm

Model No.	A	B	D	E	F	G	H	I	J	N.W.(KG)
THB-A15-40B	78	78	40	63	106	63	75	M3~M12	28	3

Axial Offset Tool Holder (External Coolant)

Gear Ratio : 1 : 1

R.P.M. : Max. 5,000 RPM



Unit : mm

Model No.	B	D	E	F	G	I	J	K	L	M	N	O	P	N.W.(KG)
THB-C04.29-30B	64	30	49/57/59	58.5	40/48/50	ER25 (2~16)	42	13	55	67	99.5	73	29	3.0
THB-C05.50-40B	80	40	75/82	85	63/70	ER32 (3~20)	50	16	63	75	110	77.5	50	6.0

Driven & Static Tool Holder

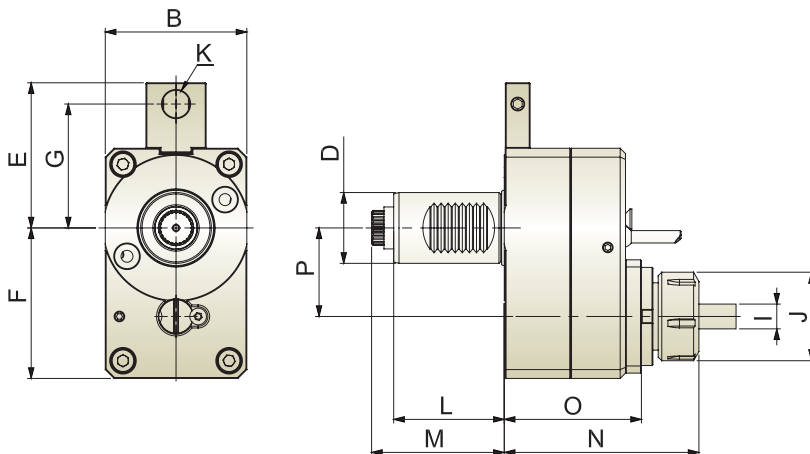


Axial Offset Tool Holder (Internal Coolant)

DIN 5480

- Tool Holder is produced in accordance with DIN 69880.
- Driven Coupling is according to DIN 5480.
- ER Collet is according to DIN6499.
- For left hand and right hand turret.

- ⚙ Gear Ratio : 1 : 1
- ⚙ R.P.M. : Max. 5,000 RPM
- ⚙ Internal Coolant : 70 bar

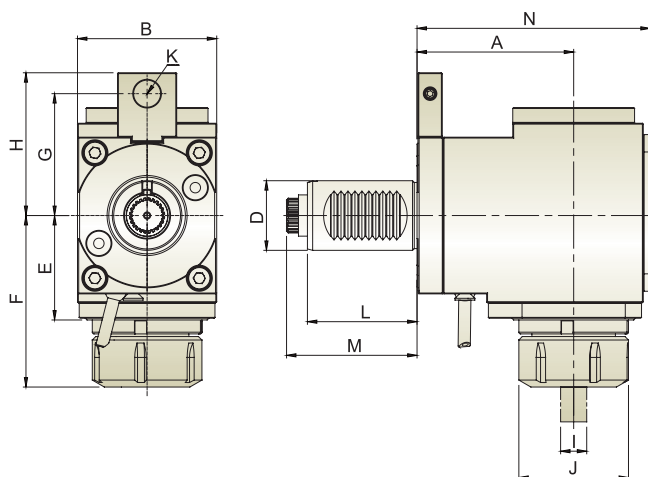


Unit : mm

Model No.	B	D	E	F	G	I	J	K	L	M	N	O	P	N.W.(KG)
THB-C04.29-30BI	64	30	49/57/59	58.5	40/48/50	ER25 (2~16)	42	13	55	67	99.5	83	29	3.0

Radial Tool Holder (External Coolant)

- ⚙ Gear Ratio : 1 : 1
- ⚙ R.P.M. : Max. 4,000 RPM



Unit : mm

Model No.	A	B	D	E	F	G	H	I	J	K	L	M	N	N.W.(KG)
THB-B02.48-20B	48	50	20	34.5	60.5	70	78.5	ER16 (1~10)	32	12	40	46.5	71.5	1.5
THB-B04.55-30B	55	64	30	39.5	66	40/63	50/73	ER25 (2~16)	42	12	45	59	86.5	3.0
THB-B04.85-30B	85	64	30	39.5	66	40/63	50/73	ER25 (2~16)	42	12	45	59	116.5	3.7
THB-B04.100-30B	100	64	30	39.5	66	40/63	50/73	ER25 (2~16)	42	12	45	59	131.5	4.2
THB-B05.65-40B	65	76	40	49	81.5	56/63/70	68/75/82	ER32 (3~20)	50	16	63	75	101	5.1
THB-B05.85-40B	85	76	40	49	81.5	56/63/70	68/75/82	ER32 (3~20)	50	16	63	75	121	6
THB-B05.100-40B	100	76	40	49	81.5	56/63/70	68/75/82	ER32 (3~20)	50	16	63	75	136	6.6
THB-B06.92-50B	92	86	50	60	100	63/70	76/83	ER40 (4~26)	63	18	78	92.7	136	9

※ Further option : 6000 RPM

Driven & Static Tool Holder

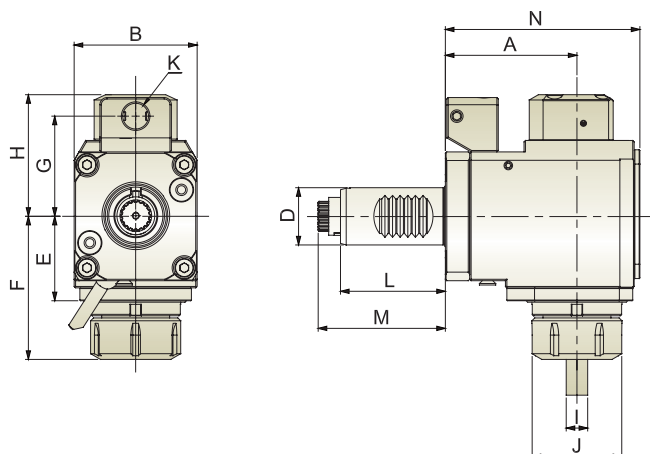


Radial Tool Holder (Internal Coolant)

DIN 5480

- Tool Holder is produced in accordance with DIN 69880.
- Driven Coupling is according to DIN 5480.
- ER Collet is according to DIN6499.
- For left hand and right hand turret.

- ⚙ Gear Ratio : 1 : 1
- ⚙ R.P.M. : Max. 4,000 RPM
- ⚙ Internal Coolant : 70 bar



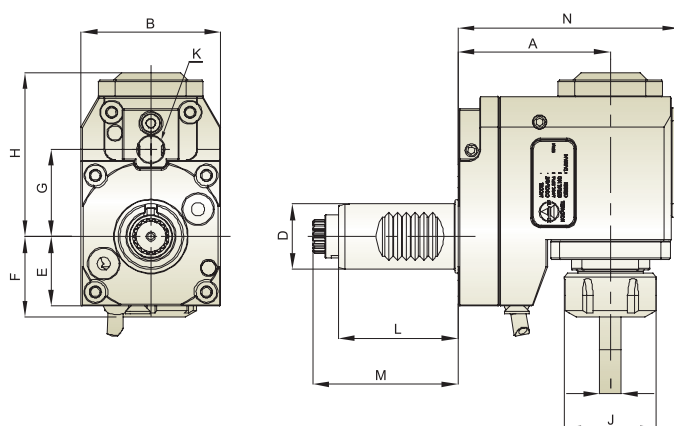
Unit : mm

Model No.	A	B	D	E	F	G	H	I	J	K	L	M	N	N.W.(KG)
THB-B04.55-30BI	55	64	30	39.5	66	40/63	68	ER25 (2~16)	42	12	45	59	86.5	3.2
THB-B04.85-30BI	85	64	30	39.5	66	40/63	68	ER25 (2~16)	42	12	45	59	116.5	3.9
THB-B04.100-30BI	100	64	30	39.5	66	40/63	68	ER25 (2~16)	42	12	45	59	131.5	4.4
THB-B05.65-40BI	65	76	40	49	81.5	56/63/70	74	ER32 (3~20)	50	16	63	75	101	5.3
THB-B05.85-40BI	85	76	40	49	81.5	56/63/70	74	ER32 (3~20)	50	16	63	75	121	6.2
THB-B05.100-40BI	100	76	40	49	81.5	56/63/70	74	ER32 (3~20)	50	16	63	75	136	6.8

※ Further option : 6000 RPM

Radial Offset Tool Holder (External Coolant)

- ⚙ Gear Ratio : 1 : 1
- ⚙ R.P.M. : Max. 4,000 RPM



Unit : mm

Model No.	A	B	D	E	F	G	H	I	J	K	L	M	N	N.W.(KG)
THB-D04.70-30B	70	64	30	32	37	40/63	75	ER25 (2~16)	42	12	55	66.7	101.5	3.6
THB-D04.100-30B	100	64	30	32	37	40/63	75	ER25 (2~16)	42	12	55	66.7	131.5	4.6
THB-D05.90-40B	90	80	40	38	31.5	63/70	115	ER32 (3~20)	50	16	63	75	125.5	7.2

※ Further option : 6000 RPM

Driven & Static Tool Holder

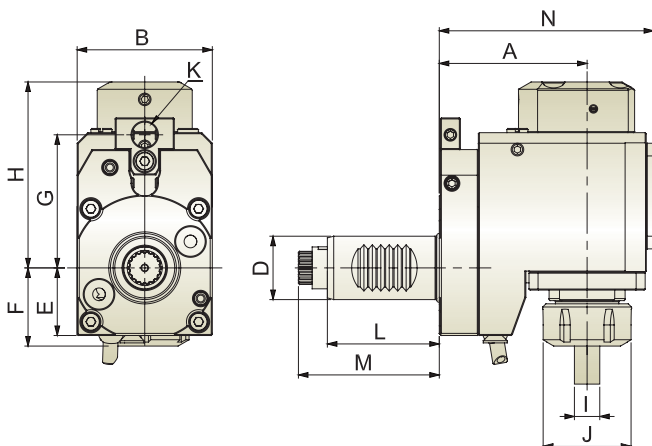


Radial Offset Tool Holder (Internal Coolant)

DIN 5480

- Tool Holder is produced in accordance with DIN 69880.
- Driven Coupling is according to DIN 5480.
- ER Collet is according to DIN6499.
- For left hand and right hand turret.

- ⚙ Gear Ratio : 1 : 1
- ⚙ R.P.M. : Max. 4,000 RPM
- ⚙ Internal Coolant : 70 bar



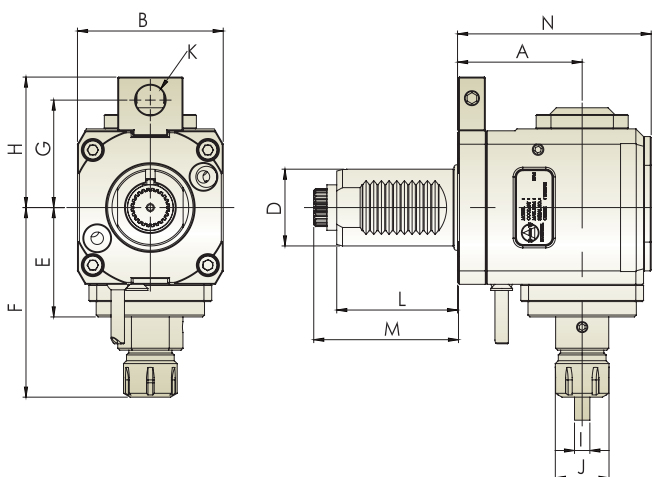
Unit : mm

Model No.	A	B	D	E	F	G	H	I	J	K	L	M	N	N.W.(KG)
THB-D04.70-30BI	70	64	30	32	37	40/63	97	ER25 (2~16)	42	12	55	66.7	101.5	4.0
THB-D04.100-30BI	100	64	30	32	37	40/63	97	ER25 (2~16)	42	12	55	66.7	131.5	5.0
THB-D05.90-40BI	90	80	40	38	31.5	63/70	124	ER32 (3~20)	50	16	63	75	125.5	7.2

※ Further option : 6000 RPM

Radial ER Tapping Tool Holder (External Coolant)

- ⚙ Gear Ratio : 1 : 1
- ⚙ R.P.M. : Max. 3,000 RPM



Unit : mm

Model No.	A	B	D	E	F	G	H	I	J	K	L	M	N	N.W.(KG)
THB-B15.65-40B	65	76	40	57	99	56/63/70	68/75/82	M3~M12	28	16	68	52	101	4.9
THB-B15.85-40B	85	76	40	57	99	56/63/70	68/75/82	M3~M12	28	16	68	52	121	5.8
THB-B15.100-40B	100	76	40	57	99	56/63/70	68/75/82	M3~M12	28	16	68	52	136	6.4


Driven & Static Tool Holder



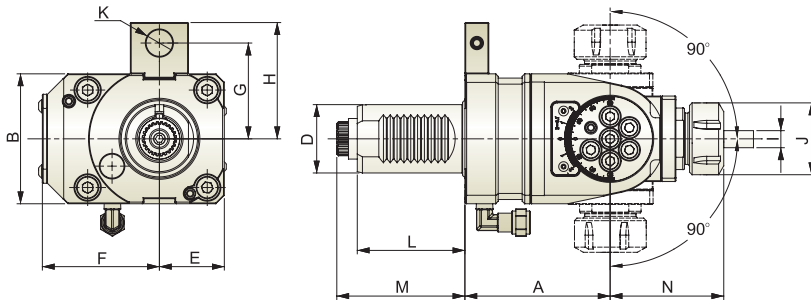
Angle Adjustable Tool Holder (External Coolant)

DIN 5480

- Tool Holder is produced in accordance with DIN 69880.
- Driven Coupling is according to DIN 5480.
- ER Collet is according to DIN6499.
- For left hand and right hand turret.
- Cutting angle can be set from +90 to -90 degree for various application.

 Gear Ratio : 1 : 1

 R.P.M. : Max. 4,000 RPM

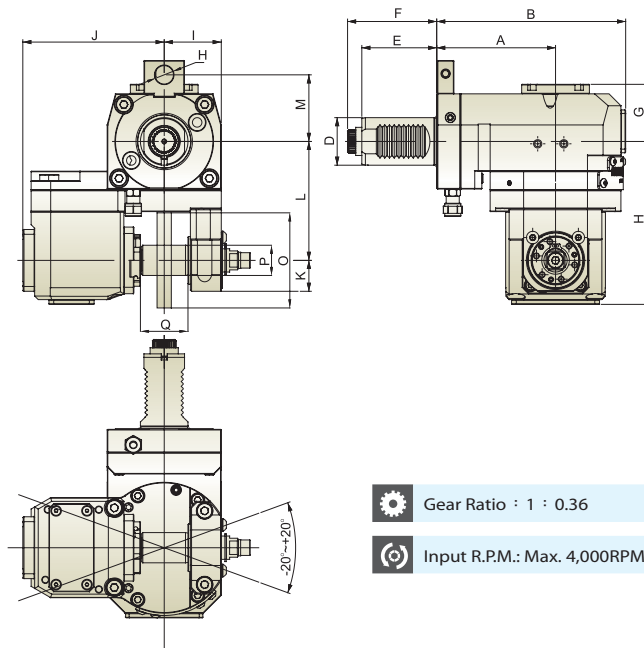


Unit : mm

Model No.	A	B	D	E	F	G	H	I	J	K	L	M	N	N.W.(KG)
THB-E04.65-40B	65	76	40	38	68.5	56/63/70	68/75/82	ER25 (2~16)	42	16	51	68	66.5	5.6
THB-E04.85-40B	85	76	40	38	68.5	56/63/70	68/75/82	ER25 (2~16)	42	16	51	68	66.5	5.6


※ Optional Accessories : Hooker Spanner.

Radial Swivel Gear Hobber Tool Holder (External Coolant)



- Tool Holder is produced in accordance with DIN 69880.
- Driven Coupling is according to DIN 5480.
- For left hand and right hand turret.
- Cutting angle can be set from +20 to -20 degree for various applications.
- Suitable for machining Spur Gear and Bevel Gear.

 Gear Ratio : 1 : 0.36

 Input R.P.M.: Max. 4,000RPM



Unit : mm

Model No.	A	B	D	E	F	G	H	I	J	K	L	M	N	O	P	Q	N.W.(KG)
THB-T29.100-40BR0.36	100	159	40	51	68	48	137	48	119	26	100	56/63/70	15.5	80	22/25.4/27/31.75	40	11.7

Driven & Static Tool Holder

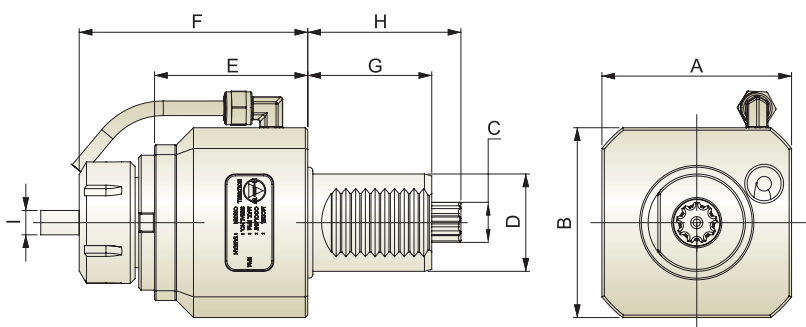


Axial Tool Holder (External Coolant)

DIN 5482

- Tool Holder is produced in accordance with DIN 69880.
- ER Collet is according to DIN 6499.
- Driven Coupling is according to DIN 5482.
- For left hand and right hand turret.

R.P.M. : Max. 6,000 RPM



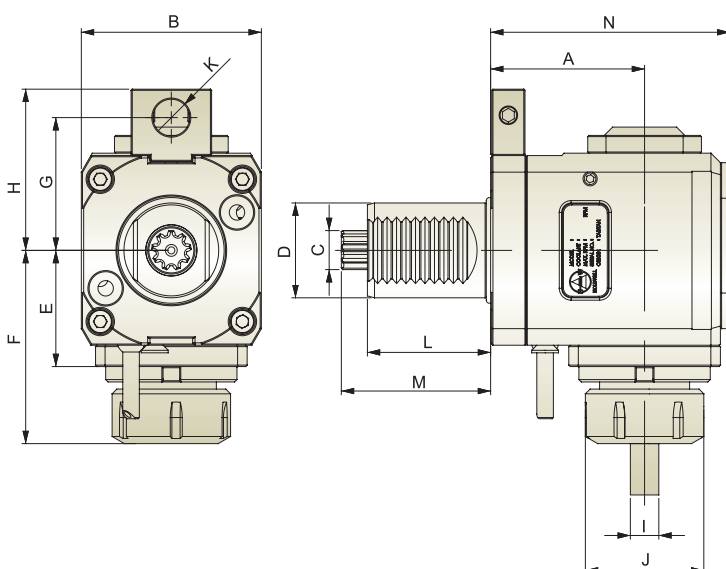
Unit : mm

Model No.	A	B	C	D	E	F	G	H	I	J	K	N.W.(KG)
THB-A05-40C	78	78	B17*14	40	63	94	51	63	ER32 (2~20)	50	8	3.3
THB-A06-40C	80	80	B17*14	40	78	119	51	63	ER40 (4~26)	63	8	4.3

Radial Tool Holder (External Coolant)

Gear Ratio : 1 : 1

R.P.M. : Max. 4,000 RPM



Unit : mm

Model No.	A	B	C	D	E	F	G	H	I	J	K	L	M	N	N.W.(KG)
THB-B05.65-40C	65	76	B17*14	40	49	81.5	56/63/70	68/75/82	ER32 (3~20)	50	16	51	63	101	5.1
THB-B06.90-40C	90	80	B17*14	40	60	98.5	56/63/70	68/75/82	ER40 (4~26)	63	16	51	63	134	8.1

※ Further option : 6000 RPM

Driven & Static Tool Holder

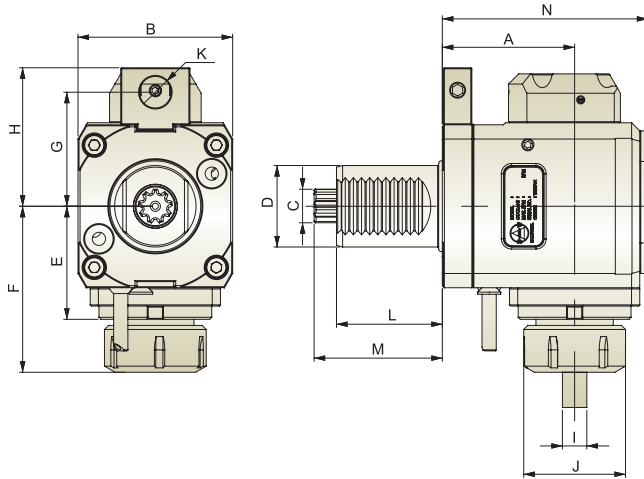


Radial Tool Holder (Internal Coolant)

DIN 5482

- Tool Holder is produced in accordance with DIN 69880.
- Driven Coupling is according to DIN 5482.
- ER Collet is according to DIN 6499.
- For left hand and right hand turret.

- ⚙ Gear Ratio : 1 : 1
- ⚙ R.P.M. : Max. 4,000 RPM
- ⚙ Internal Coolant : 70 bar



Unit : mm

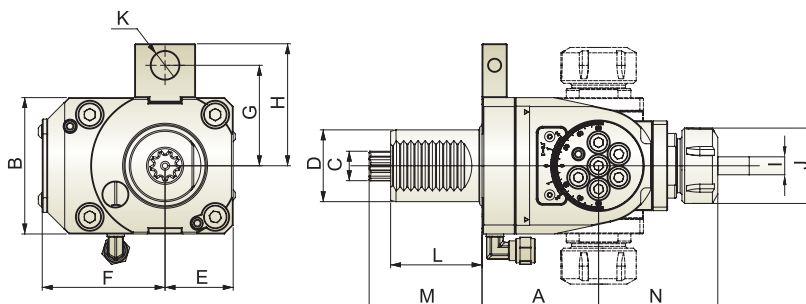
Model No.	A	B	C	D	E	F	G	H	I	J	K	L	M	N	N.W.(KG)
THB-B05.65-40CI	65	76	B17*14	40	49	81.5	56/63/70	68/75/82	ER32 (3~20)	50	16	51	63	101	5.3

※ Further option : 6000 RPM

Angle Adjustable Tool Holder (External Coolant)

- Cutting angle can be set from +90 to -90 degree for various applications.

- ⚙ Gear Ratio : 1 : 1
- ⚙ R.P.M. : Max. 4,000 RPM



Unit : mm

Model No.	A	B	C	D	E	F	G	H	I	J	K	L	M	N	N.W.(KG)
THB-E04.65-40C	65	76	B17*14	40	38	68.5	56/63/70	68/75/82	ER25 (2~16)	42	16	51	63	66.5	5.6
THB-E04.85-40C	85	76	B17*14	40	38	68.5	56/63/70	68/75/82	ER25 (2~16)	42	16	51	63	66.5	5.6

※ Optional Accessories : Hooker Spanner.

Driven & Static Tool Holder

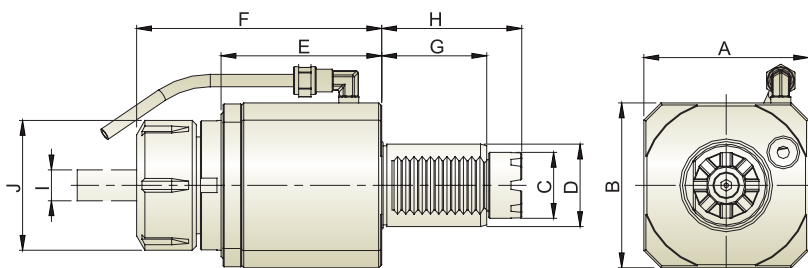


Axial Tool Holder (External Coolant)

SPUR MT TOEM

- Tool Holder is produced in accordance with DIN 69880.
- ER Collet is according to DIN6499.
- Driven Coupling is according to SPUR MT TOEM.
- For left hand and right hand turret.

R.P.M. : Max. 6,000 RPM

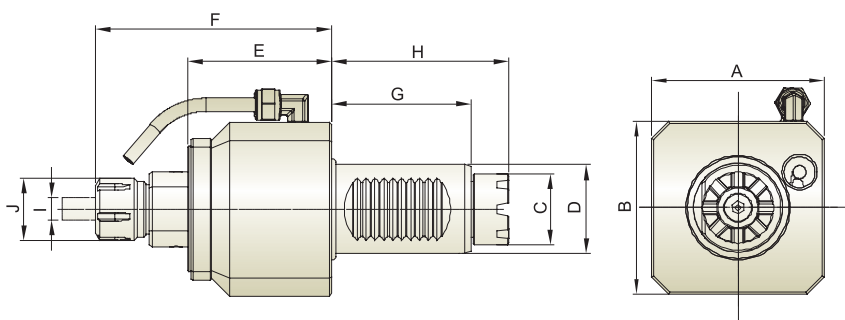


Unit : mm

Model No.	A	B	C	D	E	F	G	H	I	J	N.W.(KG)
THB-A04-30D	62	62	24	30	60.5	87	45	59	ER25 (2~16)	42	1.9
THB-A05-30D	64	64	24	30	64	98	45	59	ER32 (3~20)	50	2.3
THB-A05-40D	78	78	32	40	63	94	51	68	ER32 (3~20)	50	3.3
THB-A06-40D	80	80	32	40	78	119	51	68	ER40 (4~26)	63	4.3
THB-A06-50D	86	86	40	50	82	124	68	84	ER40 (4~26)	63	5.5
THB-A07-60D	104	104	53.2	60	110.5	152	78	110	ER50 (12~34)	78	9.6
THB-A07-80D	158	158	57	80	130	183.5	111	130	ER50 (12~34)	78	23

Axial ER Tapping Tool Holder (External Coolant)

R.P.M. : Max. 3,000 RPM



Unit : mm

Model No.	A	B	C	D	E	F	G	H	I	J	N.W.(KG)
THB-A15-40D	78	78	32	40	63	106	51	68	M3~M12	28	3.1


Driven & Static Tool Holder




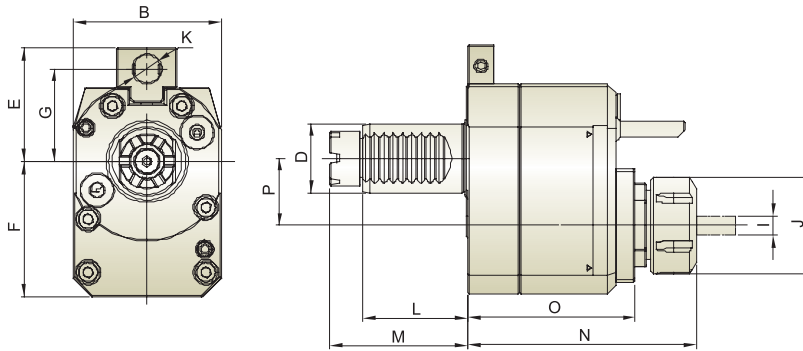
Axial Offset Tool Holder (External Coolant)

SPUR MT TOEM

- Tool Holder is produced in accordance with DIN 69880.
- ER Collet is according to DIN6499.
- Driven Coupling is according to SPUR MT TOEM.
- For left hand and right hand turret.

 Gear Ratio : 1 : 1


 R.P.M. : Max. 5,000 RPM





Unit : mm

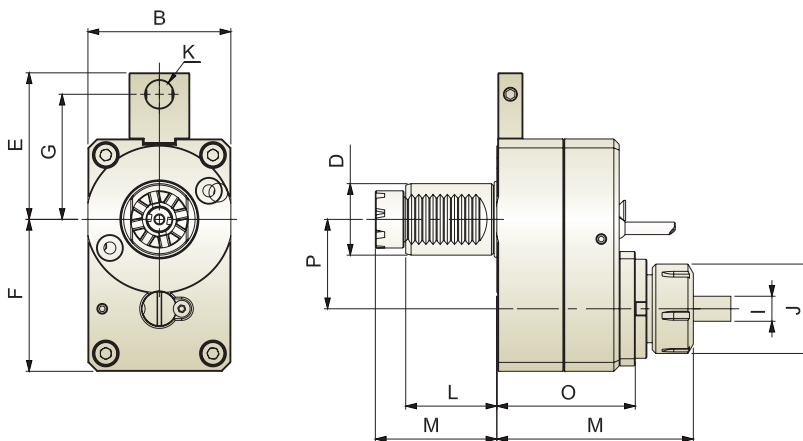
Model No.	B	D	E	F	G	I	J	K	L	M	N	O	P	N.W.(KG)
THB-C04.29-30D	64	30	57	58.5	48	ER25 (2~16)	42	12	45	62	99.5	73	29	3.0
THB-C05.50-40D	80	40	75/82	85	63/70	ER32 (3~20)	50	16	51	72	110	77.5	50	6.0

Axial Offset Tool Holder (Internal Coolant)

 Gear Ratio : 1 : 1

 R.P.M. : Max. 5,000 RPM

 Internal Coolant : 70 bar



Unit : mm

Model No.	B	D	E	F	G	I	J	K	L	M	N	O	P	N.W.(KG)
THB-C04.29-30DI	64	30	57	58.5	48	ER25 (2~16)	42	12	45	62	109.5	83	29	3.3


Driven & Static Tool Holder




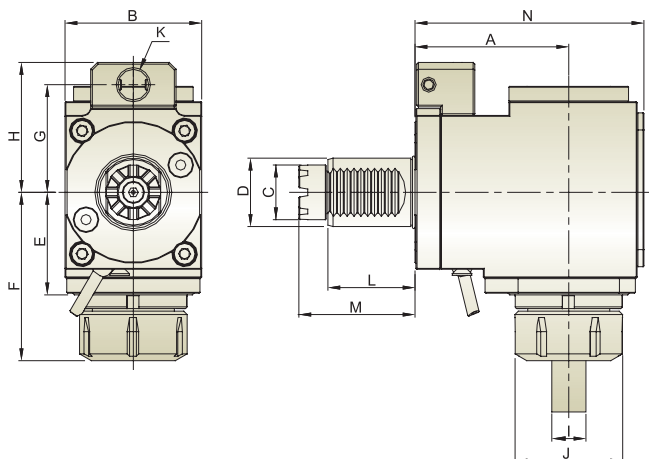
Radial Tool Holder (External Coolant)

SPUR MT TOEM

- Tool Holder is produced in accordance with DIN 69880.
- Driven Coupling is according to SPUR MT TOEM.
- ER Collet is according to DIN6499.
- For left hand and right hand turret.

 Gear Ratio : 1 : 1

 R.P.M. : Max. 4,000 RPM





Unit : mm

Model No.	A	B	C	D	E	F	G	H	I	J	K	L	M	N	N.W.(KG)
THB-B04.55-30D	55	64	24	30	39.5	66	40/63	50/73	ER25 (2~16)	42	12	45	59	86.5	3.0
THB-B05.65-30D	65	64	24	30	47	75	40/63	50/73	ER32 (3~20)	50	12	45	59	101	3.7
THB-B05.65-40D	65	76	32	40	49	81.5	63/70	75/82	ER32 (3~20)	50	16	51	68	101	5.1
THB-B06.90-40D	90	80	32	40	60	98.5	63/70	73/80	ER40 (4~26)	63	16	51	68	134	8.1
THB-B06.92-50D	92	86	40	50	60	100	70/88	83/101	ER40 (4~26)	63	18	68	84	136	9

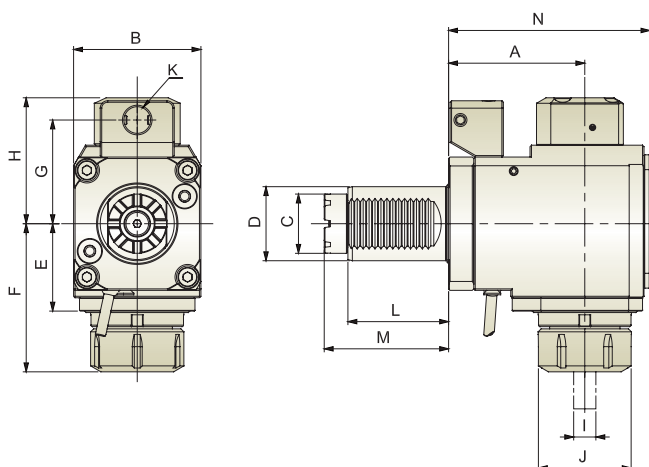
※ Further option : 6000 RPM

Radial Tool Holder (Internal Coolant)

 Gear Ratio : 1 : 1

 R.P.M. : Max. 4,000 RPM

 Internal Coolant : 70 bar



Unit : mm

Model No.	A	B	C	D	E	F	G	H	I	J	K	L	M	N	N.W.(KG)
THB-B04.55-30DI	55	64	24	30	39.5	66	40/63	68	ER25 (2~16)	42	12	45	59	86.5	3.2
THB-B05.65-30DI	65	64	24	30	47	75	40/63	72	ER32 (3~20)	50	12	45	59	101	3.7
THB-B05.65-40DI	65	76	32	40	49	81.5	63/70	74	ER32 (3~20)	50	16	51	68	101	5.1

※ Further option : 6000 RPM

Driven & Static Tool Holder

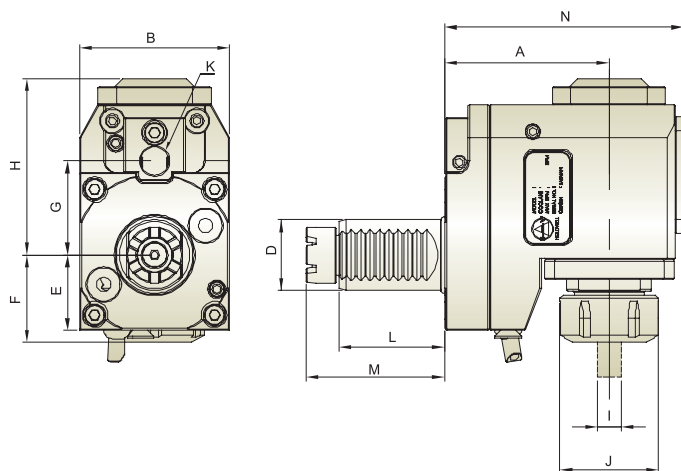


Radial Offset Tool Holder (External Coolant)

SPUR MT TOEM

- Tool Holder is produced in accordance with DIN 69880.
- ER Collet is according to DIN6499.
- Driven Coupling is according to SPUR MT TOEM.
- For left hand and right hand turret.

- ⚙️ Gear Ratio : 1 : 1
- ⚙️ R.P.M. : Max. 4,000 RPM



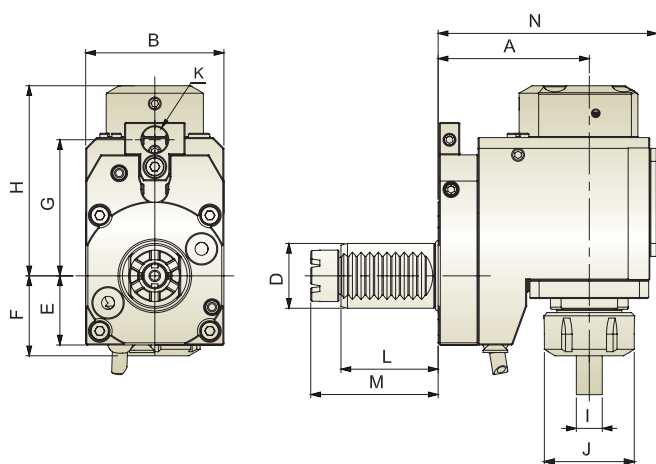
Unit : mm

Model No.	A	B	D	E	F	G	H	I	J	K	L	M	N	N.W.(KG)
THB-D04.70-30D	70	64	30	32	37	40/63	75	ER25 (2~16)	42	12	45	59	101.5	4.0
THB-D05.90-40D	90	80	40	38	31.5	63/70	102	ER32 (3~20)	50	16	51	68	125.5	7.2
THB-D07.102-60D	102	104	60	54	75	89	116	ER40 (4~26)	78	16	78	100	154	14

※ Further option : 6000 RPM

Radial Offset Tool Holder (Internal Coolant)

- ⚙️ Gear Ratio : 1 : 1
- ⚙️ R.P.M. : Max. 4,000 RPM
- ⦿ Internal Coolant : 70 bar



Unit : mm

Model No.	A	B	D	E	F	G	H	I	J	K	L	M	N	N.W.(KG)
THB-D04.70-30DI	70	64	30	32	37	40/63	97	ER25 (2~16)	42	12	45	59	101.5	4.0
THB-D05.90-40DI	90	80	40	38	31.5	63/70	124	ER32 (3~20)	50	16	51	68	125.5	7.2

※ Further option : 6000 RPM

Driven & Static Tool Holder



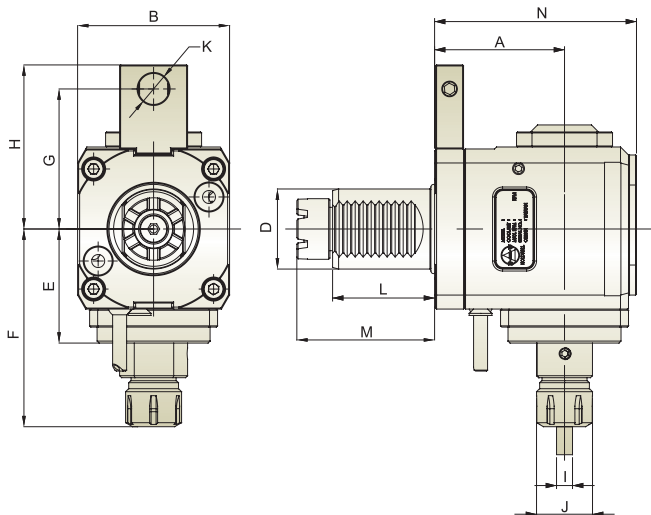
Radial ER Tapping Tool Holder (External Coolant)

SPUR MT TOEM

- Tool Holder is produced in accordance with DIN 69880.
- Driven Coupling is according to SPUR MT TOEM.
- ER Collet is according to DIN6499.
- For left hand and right hand turret.

Gear Ratio : 1 : 1

R.P.M. : Max. 3,000 RPM



Unit : mm

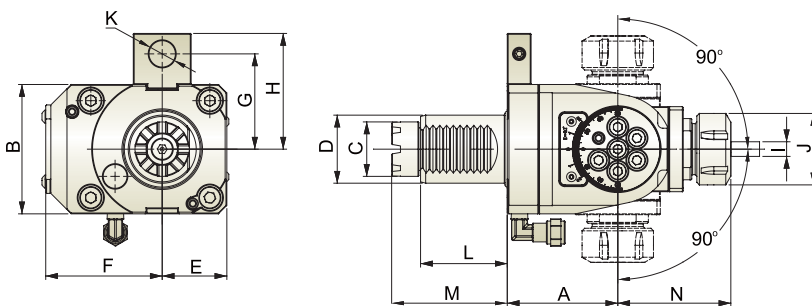
Model No.	A	B	C	D	E	F	G	H	I	J	K	L	M	N	N.W.(KG)
THB-B15.65-40D	65	76	32	40	57	99	56/63/70	68/75/82	M3~M12	28	16	68	51	101	4.9

Angle Adjustable Tool Holder (External Coolant)

- Cutting angle can be set from +90 to -90 degree for various applications.

Gear Ratio : 1 : 1

R.P.M. : Max. 4,000 RPM



Unit : mm

Model No.	A	B	C	D	E	F	G	H	I	J	K	L	M	N	N.W.(KG)
THB-E04.65-40D	65	76	32	40	38	68.5	63/70	75/82	ER25 (2~16)	42	16	51	68	66.5	4.65

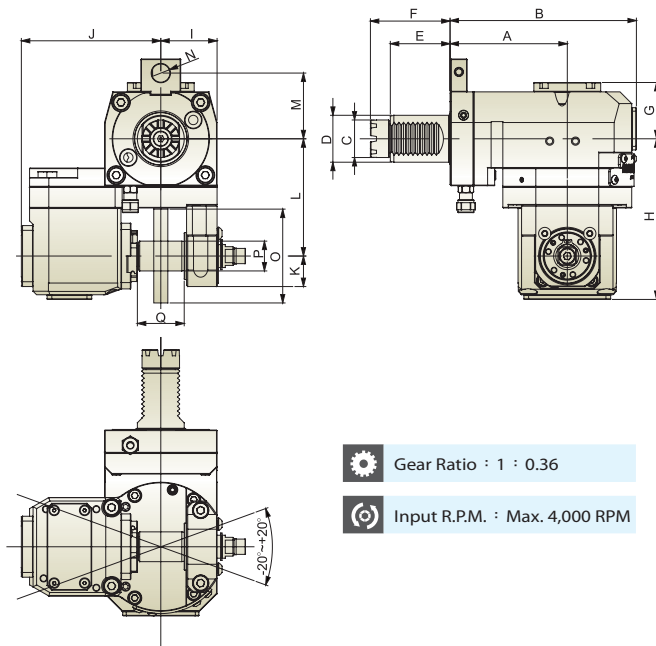
※ Optional Accessories : Hooker Spanner.

Driven & Static Tool Holder



Radial Swivel Gear Hobber Tool Holder (External Coolant)

SPUR MT TOEM



- Tool Holder is produced in accordance with DIN 69880.
- Driven Coupling is according to SPUR MT TOEM.
- For left hand and right hand turret.
- Cutting angle can be set from +20 to -20 degree for various applications.
- Suitable for machining Spur Gear and Bevel Gear.



Unit : mm

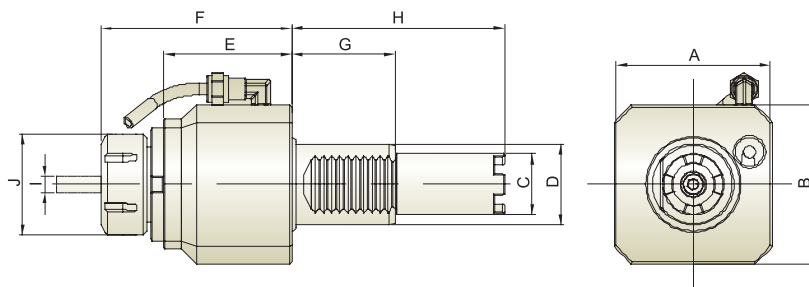
Model No.	A	B	C	D	E	F	G	H	I	J	K	L	M	N	O	P	Q	N.W.(KG)
THB-T29.100-40DR0.36	100	159	32	40	51	68	48	137	48	119	26	100	56/63/70	15.5	80	22/25.4/27/31.75	40	11.7

Axial Tool Holder (External Coolant)

HAAS

- Tool Holder is produced in accordance with DIN 69880.
- Driven Coupling is according to HAAS.
- ER Collet is according to DIN 6499.
- For left hand and right hand turret.

R.P.M. : Max. 6,000 RPM



Unit : mm

Model No.	A	B	C	D	E	F	G	H	I	J	N.W.(KG)
THB-A05-40E	78	78	30	40	63	94	51	104.85	ER32 (3~20)	50	3.4
THB-A05-40F	78	78	30	40	63	94	51	117.55	ER32 (3~20)	50	3.4
THB-A06-40E	80	80	30	40	78	119	51	104.85	ER40 (4~26)	63	4.4
THB-A06-40F	80	80	30	40	78	119	51	117.55	ER40 (4~26)	63	4.4

Driven & Static Tool Holder

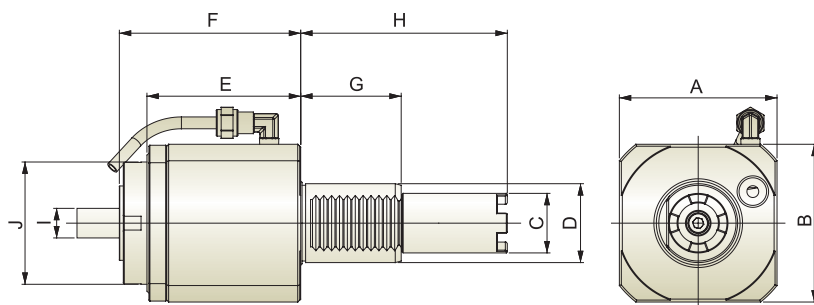


Axial Female Thread Tool Holder (External Coolant)

HAAS

- Tool Holder is produced in accordance with DIN 69880.
- ER Collet is according to DIN 6499.
- Driven Coupling is according to HAAS.
- For left hand and right hand turret.

R.P.M. : Max. 6,000 RPM



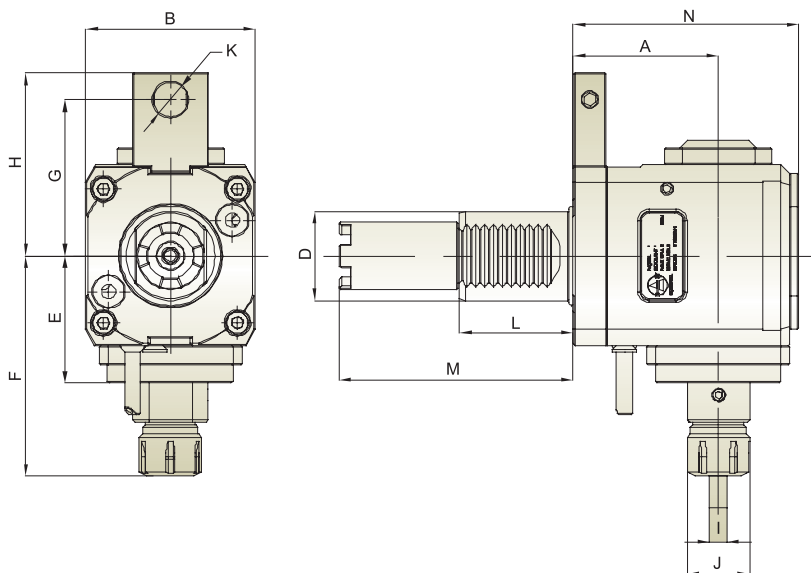
Unit : mm

Model No.	A	B	C	D	E	F	G	H	I	J	N.W.(KG)
THB-A12-40E	80	80	30	40	78	92	51	104.85	ER32 (3~20)	62	3.4
THB-A12-40F	80	80	30	40	78	92	51	117.55	ER32 (3~20)	62	3.4

Radial Tool Holder (External Coolant)

Gear Ratio : 1 : 1

R.P.M. : Max. 4,000 RPM



Unit : mm

Model No.	A	B	C	D	E	F	G	H	I	J	K	L	M	N	N.W.(KG)
THB-B05.65-40E	65	76	30	40	49	81.5	63/70	75/82	ER32 (3~20)	50	16	51	117.55	101	5.1
THB-B05.65-40F	65	76	30	40	49	81.5	63/70	75/82	ER32 (3~20)	50	16	51	117.55	101	5.1
THB-B06.90-40E	90	80	30	40	60	98.5	63/70	76	ER40 (4~26)	63	16	51	104.85	134	8.1
THB-B06.90-40F	90	80	30	40	60	98.5	63/70	76	ER40 (4~26)	63	16	51	104.85	134	8.1

※ Further option : 6000 RPM

Driven & Static Tool Holder

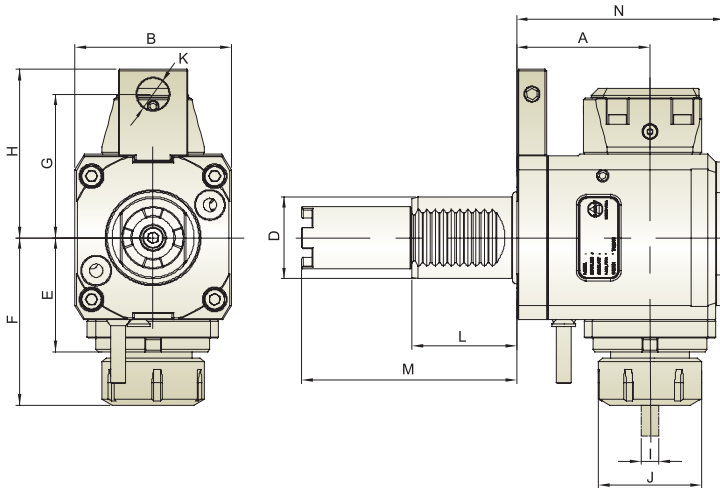


Radial Tool Holder (Internal Coolant)

HAAS

- Tool Holder is produced in accordance with DIN 69880.
- Driven Coupling is according to HAAS.
- ER Collet is according to DIN 6499.
- For left hand and right hand turret.

- ⚙ Gear Ratio : 1 : 1
- ⚙ R.P.M. : Max. 4,000 RPM
- ⚙ Internal Coolant : 70 bar



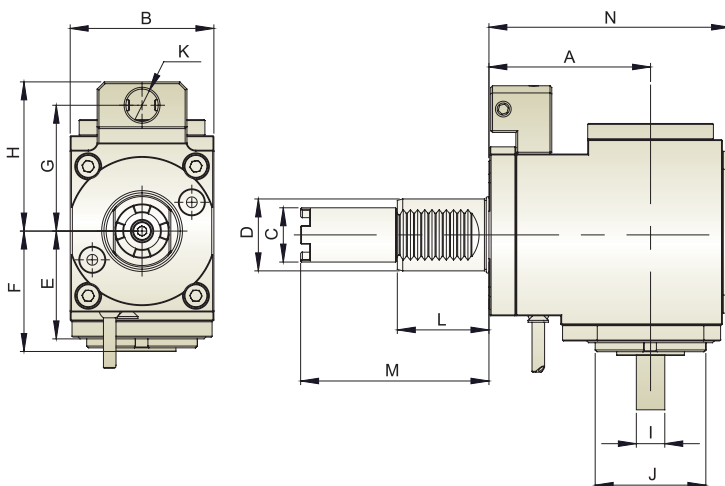
Unit : mm

Model No.	A	B	D	E	F	G	H	I	J	K	L	M	N	N.W.(KG)
THB-B05.65-40EI	65	76	40	49	81.5	63/70	75/82	ER32 (3~20)	50	16	51	104.85	101	5.1
THB-B05.65-40FI	65	76	40	49	81.5	63/70	75/82	ER32 (3~20)	50	16	51	117.55	101	5.1
THB-B06.90-40EI	90	80	40	60	98.5	63/70	75/82	ER40 (4~26)	63	16	51	104.85	134	8.3
THB-B06.90-40FI	90	80	40	60	98.5	63/70	75/82	ER40 (4~26)	63	16	51	117.55	134	8.3

※ Further option : 6000 RPM

Radial Female Thread Tool Holder (External Coolant)

- ⚙ Gear Ratio : 1 : 1
- ⚙ R.P.M. : Max. 4,000 RPM



Unit : mm

Model No.	A	B	C	D	E	F	G	H	I	J	K	L	M	N	N.W.(KG)
THB-B12.90-40E	90	80	30	40	60	67	63/70	75/83	ER32 (3~20)	62	16	51	104.85	134	5.1
THB-B12.90-40F	90	80	30	40	60	67	63/70	75/83	ER32 (3~20)	62	16	51	117.55	134	5.1

※ Further option : 6000 RPM

Driven & Static Tool Holder



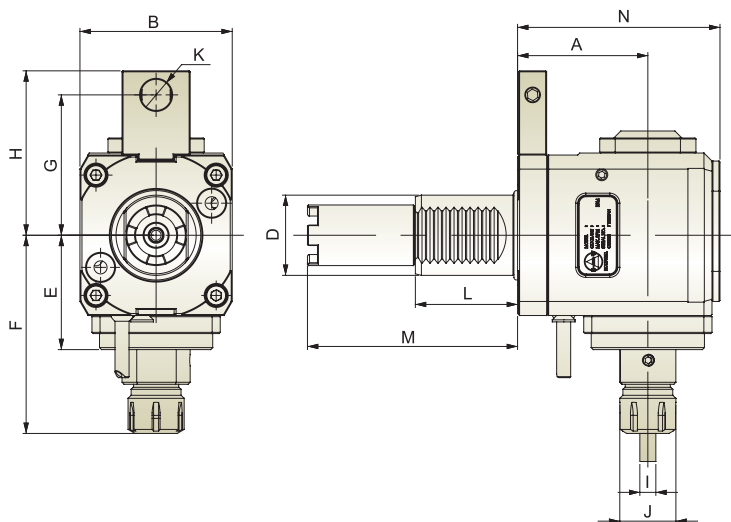
Radial ER Tapping Tool Holder (External Coolant)

HAAS

- Tool Holder is produced in accordance with DIN 69880.
- Driven Coupling is according to HAAS.
- ER Collet is according to DIN 6499.
- For left hand and right hand turret.

Gear Ratio : 1 : 1

R.P.M. : Max. 3,000 RPM



Unit : mm

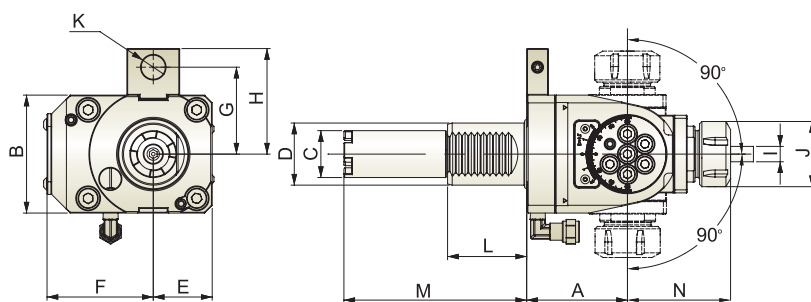
Model No.	A	B	D	E	F	G	H	I	J	K	L	M	N	N.W.(KG)
THB-B15.65-40E	65	76	40	57	99	56/63/70	68/75/82	M3~M12	28	16	51	104.85	101	4.9
THB-B15.65-40F	65	76	40	57	99	56/63/70	68/75/82	M3~M12	28	16	51	117.55	101	4.9

Angle Adjustable Tool Holder (External Coolant)

- Tool Holder is produced in accordance with DIN 69880.
- Driven Coupling is according to HAAS.
- ER Collet is according to DIN 6499.
- For left hand and right hand turret.
- Cutting degree can be set from +90 to -90 degree for various applications.

Gear Ratio : 1 : 1

R.P.M. : Max. 4,000 RPM



Unit : mm

Model No.	A	B	C	D	E	F	G	H	I	J	K	L	M	N	N.W.(KG)
THB-E04.65-40E	65	76	30	40	38	68.5	63/70	75/82	ER25 (2~16)	42	16	51	104.85	66.5	4.65
THB-E04.65-40F	65	76	30	40	38	68.5	63/70	75/82	ER25 (2~16)	42	16	51	117.55	66.5	4.65

※ Optional Accessories : Hooker Spanner.

Driven & Static Tool Holder

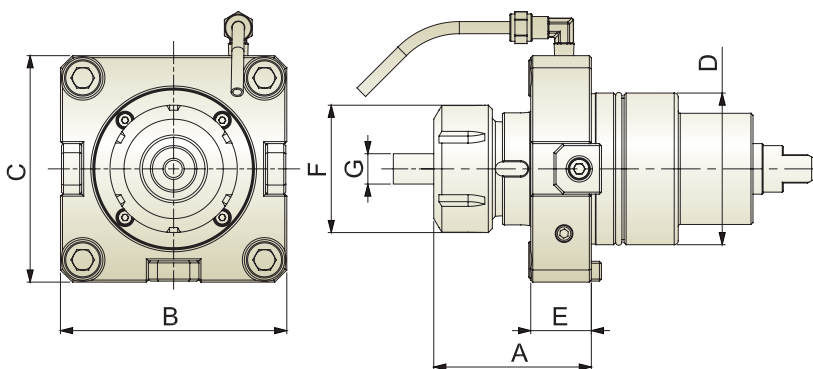


Axial Tool Holder (External Coolant)

BMT-1809 (DAEWOO)

- Driven Coupling is according to DIN 1809.
- ER Collet is according to DIN 6499.

R.P.M. : Max. 6,000 RPM



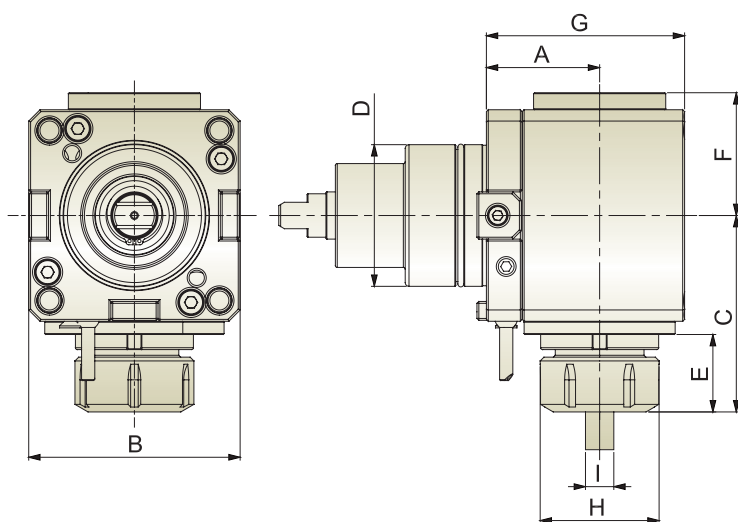
Unit : mm

Model No.	A	B	C	D	E	F	G	N.W.(KG)	Suitable Machine
THM-A04-55A	61	85	85	55	29	42	ER25 (2~16)	3.3	PUMA230,240,280 M-MS PUMA1500Y,2000Y,2500Y
THM-A05-65A	63.5	94	94	65	30	50	ER32 (3~20)	4.2	PUMA 300M 300MS
THM-A06-75A	78	112	112	75	30	63	ER40 (4~26)	5.2	PUMA 400M

Radial Tool Holder (External Coolant)

Gear Ratio : 1 : 1

R.P.M. : Max.4,000 RPM



Unit : mm

Model No.	A	B	C	D	E	F	G	H	I	N.W.(KG)	Suitable Machine
THM-B04.60-55A	60	85	77.5	55	26.5	53.5	86	42	ER25 (2~16)	7.5	PUMA230,240,280 M-MS PUMA1500Y,2000Y,2500Y
THM-B05.72-65A	72	94	95	65	34	60	108	50	ER32 (3~20)	9.8	PUMA 300M 300MS
THM-B06.60-75A	60	112	104	75	41	65	105	63	ER40 (4~26)	11.6	PUMA 400M

Driven & Static Tool Holder

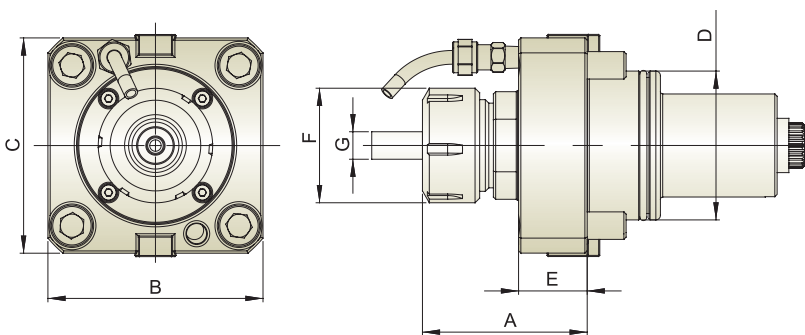


Axial Tool Holder (External Coolant)

BMT-5480

- Driven Coupling is according to DIN 5480.
- ER Collet is according to DIN 6499.

R.P.M. : Max. 6,000 RPM



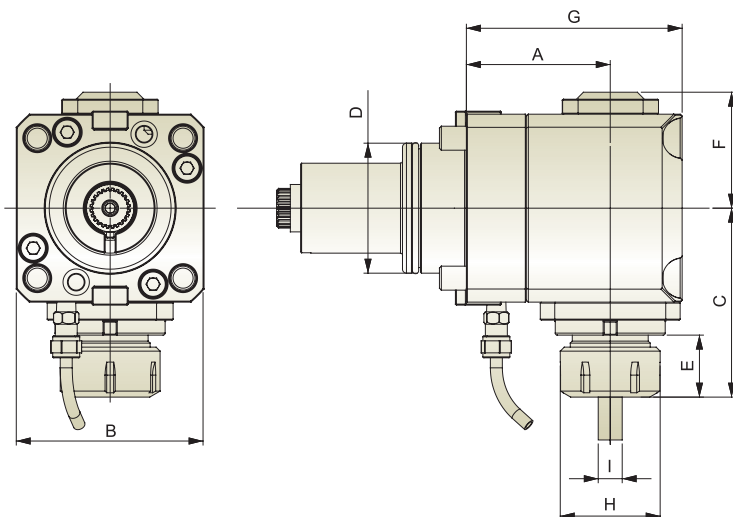
Unit : mm

Model No.	A	B	C	D	E	F	G	N.W.(KG)
THM-A05-65B	63.5	94	94	65	30	50	ER32 (3~20)	4.2

Radial Tool Holder (External Coolant)

Gear Ratio : 1 : 1

R.P.M. : Max. 4,000 RPM



Unit : mm

Model No.	A	B	C	D	E	F	G	H	I	N.W.(KG)
THM-B05.72-65B	72	94	95	65	34	60	108	50	ER32 (3~20)	9.8

※ Further option : 6000 RPM

Driven & Static Tool Holder

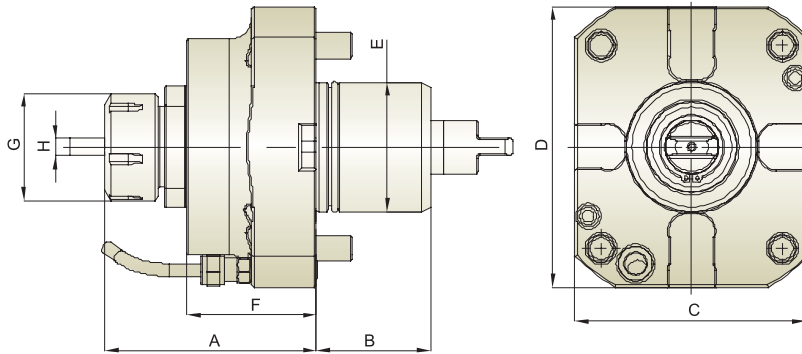


Axial Tool Holder (External Coolant)

MORI SEIKI

- ER Collet is according to DIN 6499.

R.P.M. : Max. 6,000 RPM



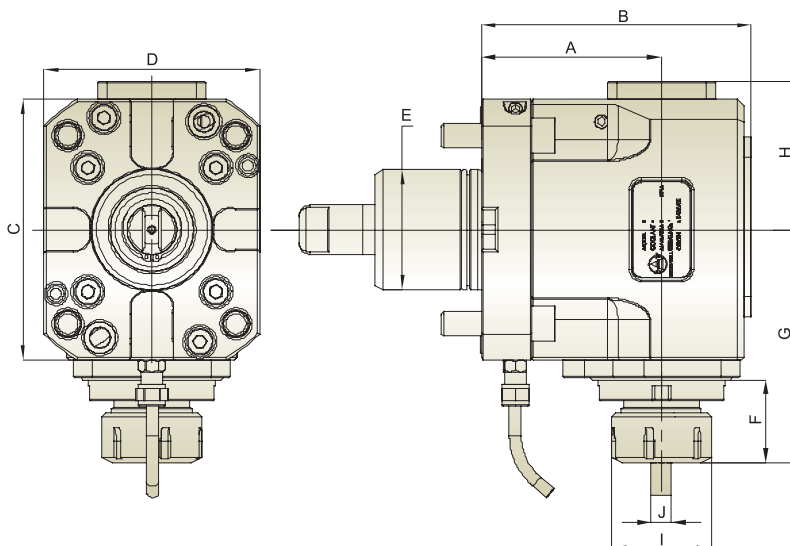
Unit : mm

Model No.	A	B	C	D	E	F	G	H	N.W.(KG)	Suitable Machine
THG-A05-60A	98	53	108	130	60	60	50	ER32 (3~20)	6.2	NL 1500/2000/2500/3000

Radial Tool Holder (External Coolant)

Gear Ratio : 1 : 1

R.P.M. : Max. 4,000 RPM



Unit : mm

Model No.	A	B	C	D	E	F	G	H	I	J	N.W.(KG)	Suitable Machine
THG-B05.90-60A	90	135	130	108	60	41.5	116.5	74	50	ER32 (3~20)	6.2	NL 1500/2000/2500/3000


※ Further option : 6000 RPM


Driven & Static Tool Holder

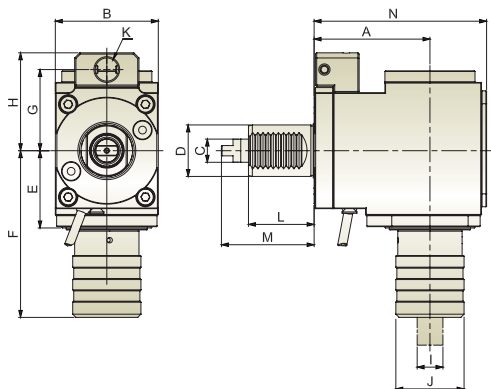


Customized Products - Tool Holder

Radial Tapping Tool Holder (External Coolant)

 Gear Ratio : 1 : 1

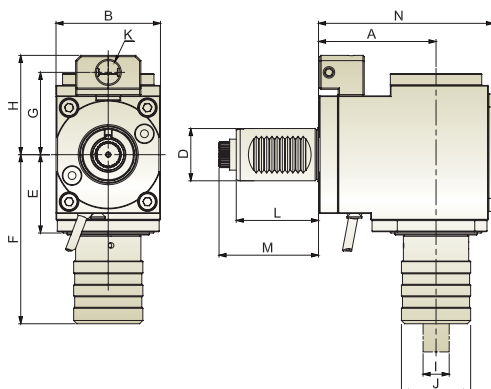
 R.P.M. : Max. 3,000 RPM



DIN 1809

Unit : mm

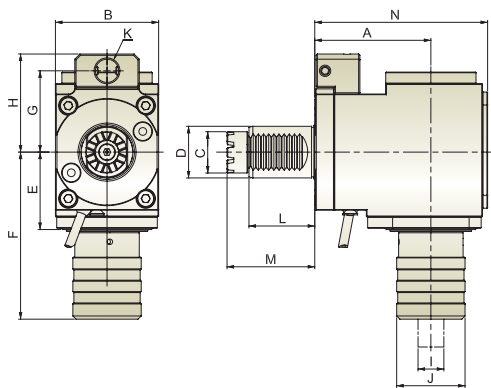
Model No.	A	B	C	D	E	F	G	H	I	J	K	L	M	N	N.W.(KG)
THB-B20.90-40A	90	80	18	40	59	129.5	63/70	73/80	M8~M20	63	16	51	72	134	8.1
THB-B20.92-50A	92	86	25	50	59	131	70/88	83/101	M8~M20	63	18	68	92	136	9



DIN 5480

Unit : mm

Model No.	A	B	D	E	F	G	H	I	J	K	L	M	N	N.W.(KG)
THB-B20.90-40B	90	80	40	60	129.5	63/70	75/82	M8~M20	63	16	63	75	134	8.1
THB-B20.92-50B	92	86	50	60	131	63/70	76/83	M8~M20	63	18	78	92.7	136	9



SPUR MT TOEM

Unit : mm

Model No.	A	B	C	D	E	F	G	H	I	J	K	L	M	N	N.W.(KG)
THB-B20.90-40D	90	80	32	40	59	129.5	63/70	73/80	M8~M20	63	16	51	68	134	8.1
THB-B20.92-50D	92	86	40	50	59	131	70/88	83/101	M8~M20	63	18	68	84	136	9



Driven & Static Tool Holder

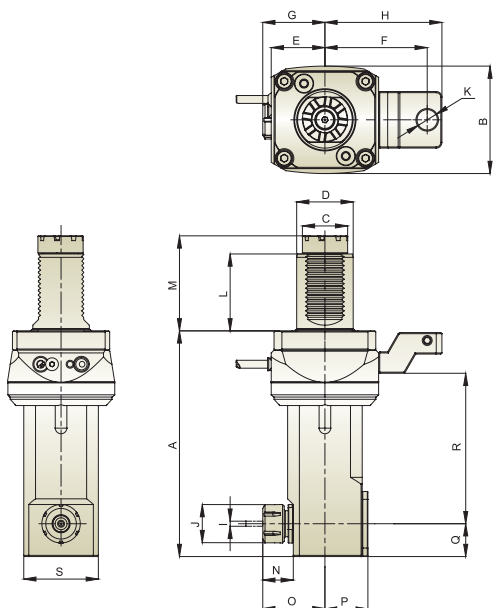


Customized Products - Modular Tool Holder

Radial Tool Holder (External Coolant)

SPUR MT TOEM

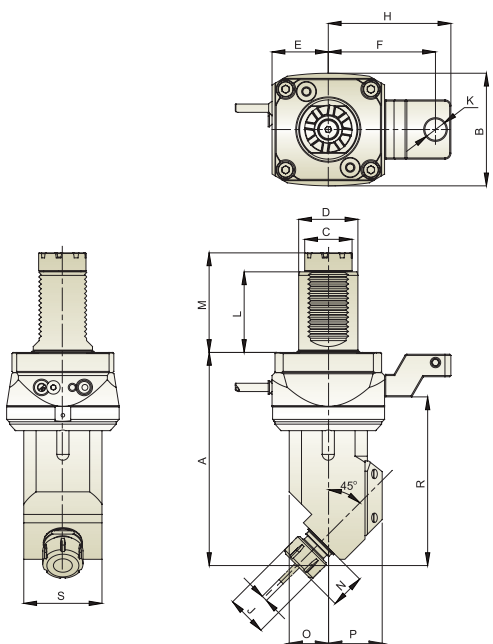
-  Gear Ratio : 1 : 1
-  R.P.M. : Max. 6,000 RPM



Unit : mm

Model No.	A	B	C	D	E	F	G	H	I	J	K	L	M	N	O	P	Q	R	S	N.W.(KG)
THK-B03.164.5-50D	164.5	95	40	50	47.5	70/88	55	83/101	ER20 (1~13)	34	18	68	84	29.5	57.5	38	29	98	66	7.7
THK-B03.199.5-50D	199.5	95	40	50	47.5	70/88	55	83/101	ER20 (1~13)	34	18	68	84	29.5	57.5	38	29	133	66	8.5
THK-B04.164.5-50D	164.5	95	40	50	47.5	70/88	55	83/101	ER25 (2~16)	42	18	68	84	40	68	38	29	98	66	7.7
THK-B04.199.5-50D	199.5	95	40	50	47.5	70/88	55	83/101	ER25 (2~16)	42	18	68	84	40	68	38	29	133	66	8.5

45° Tool Holder (External Coolant)



Unit : mm

Model No.	A	B	C	D	E	F	H	I	J	K	L	M	N	O	P	S	N.W.(KG)
THK-U03.45-50D	179	95	40	50	47.5	70/88	83/101	ER20 (1~13)	34	18	68	84	30	33	46	66	5